

Datasheet for ABIN7294852
anti-ADCY1 antibody (Center)[Go to Product page](#)

2 Images

Overview

Quantity:	100 µL
Target:	ADCY1
Binding Specificity:	Center
Reactivity:	Human, Mouse, Rat, Cow
Host:	Rabbit
Clonality:	Polyclonal
Conjugate:	This ADCY1 antibody is un-conjugated
Application:	Western Blotting (WB), Immunohistochemistry (IHC)

Product Details

Immunogen:	KLH-conjugated synthetic peptide encompassing a sequence within the center region of human Adenylate Cyclase 1.
Specificity:	Recognizes endogenous levels of Adenylate Cyclase 1 protein.
Characteristics:	Rabbit polyclonal antibody to Adenylate Cyclase 1
Purification:	The antibody was purified by immunogen affinity chromatography.

Target Details

Target:	ADCY1
Alternative Name:	Adenylate Cyclase 1 (ADCY1 Products)
Background:	Adenylate cyclase type 1, ATP pyrophosphate-lyase 1, Adenylate cyclase type I, Adenylyl

Target Details

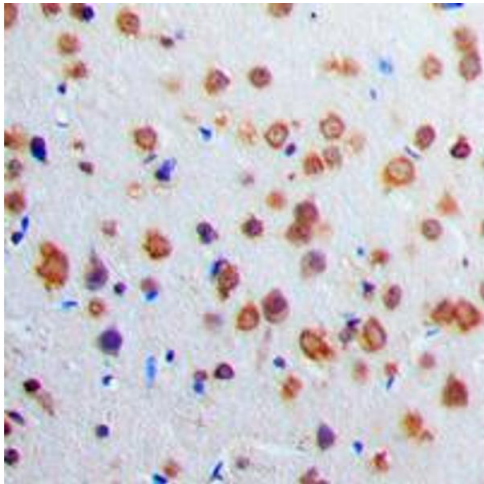
	cyclase 1, Ca(2+)/calmodulin-activated adenylyl cyclase
Gene ID:	107, 432530
UniProt:	Q08828 , O88444
Pathways:	EGFR Signaling Pathway , Neurotrophin Signaling Pathway , Thyroid Hormone Synthesis , cAMP Metabolic Process , Myometrial Relaxation and Contraction , G-protein mediated Events , Interaction of EGFR with phospholipase C-gamma

Application Details

Application Notes:	WB (1:500 - 1:1000), IH (1:100 - 1:200)
Restrictions:	For Research Use only

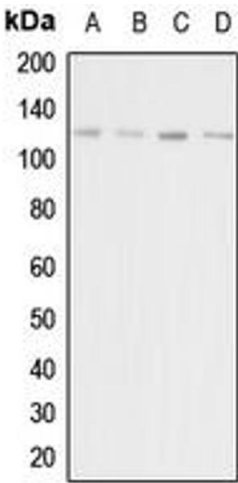
Handling

Format:	Liquid
Buffer:	Liquid in 0.42 % Potassium phosphate, 0.87 % Sodium chloride, pH 7.3, 30 % glycerol, and 0.01 % sodium azide.
Preservative:	Sodium azide
Precaution of Use:	This product contains Sodium azide: a POISONOUS AND HAZARDOUS SUBSTANCE which should be handled by trained staff only.
Storage:	-20 °C
Storage Comment:	Shipped at 4°C. Upon delivery aliquot and store at -20°C for one year. Avoid freeze/thaw cycles.
Expiry Date:	12 months



Immunohistochemistry

Image 1. Immunohistochemical analysis of Adenylate Cyclase 1 staining in human brain formalin fixed paraffin embedded tissue section. The section was pre-treated using heat mediated antigen retrieval with sodium citrate buffer (pH 6.0). The section was then incubated with the antibody at room temperature and detected using an HRP conjugated compact polymer system. DAB was used as the chromogen. The section was then counterstained with haematoxylin and mounted with DPX.



Western Blotting

Image 2. Western blot analysis of Adenylate Cyclase 1 expression in HeLa (A), HEK293T (B), mouse liver (C), rat kidney (D) whole cell lysates.