

Datasheet for ABIN7294854
anti-ADCY5/6 antibody (C-Term)[Go to Product page](#)

2 Images

Overview

Quantity:	100 µL
Target:	ADCY5/6
Binding Specificity:	C-Term
Reactivity:	Human, Mouse, Rat, Dog, Monkey, Rabbit, Zebrafish (Danio rerio)
Host:	Rabbit
Clonality:	Polyclonal
Conjugate:	This ADCY5/6 antibody is un-conjugated
Application:	Western Blotting (WB), Immunofluorescence (IF), Immunochromatography (IC)

Product Details

Immunogen:	KLH-conjugated synthetic peptide encompassing a sequence within the C-term region of human Adenylate Cyclase 5/6.
Specificity:	Recognizes endogenous levels of Adenylate Cyclase 5/6 protein.
Characteristics:	Rabbit polyclonal antibody to Adenylate Cyclase 5/6
Purification:	The antibody was purified by immunogen affinity chromatography.

Target Details

Target:	ADCY5/6
Alternative Name:	Adenylate Cyclase 5/6 (ADCY5/6 Products)
Background:	ADCY5, Adenylate cyclase type 5, ATP pyrophosphate-lyase 5, Adenylate cyclase type V,

Target Details

	Adenylyl cyclase 5, ADCY6, KIAA0422, Adenylate cyclase type 6, ATP pyrophosphate-lyase 6, Adenylate cyclase type VI, Adenylyl cyclase 6, Ca(2+)-inhibitable adenylyl cyclase
Gene ID:	111, 112, 224129
UniProt:	095622 , 043306 , P84309 , Q01341 , Q04400 , Q03343

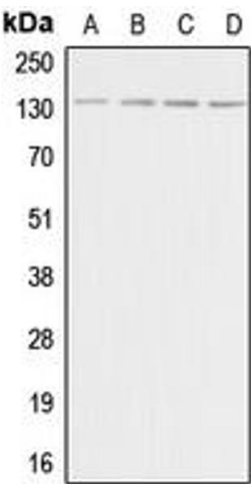
Application Details

Application Notes:	WB (1:500 - 1:1000), IF/IC (1:100 - 1:500)
Restrictions:	For Research Use only

Handling

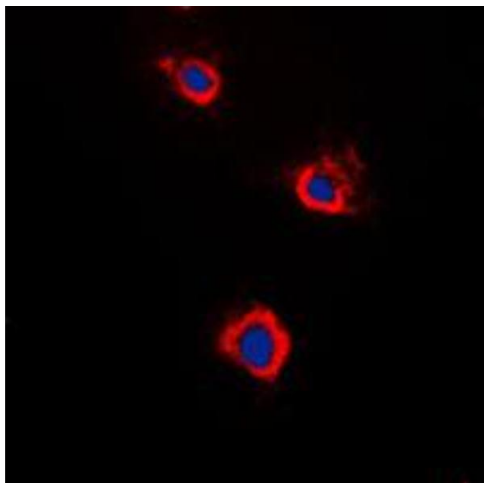
Format:	Liquid
Buffer:	Liquid in 0.42 % Potassium phosphate, 0.87 % Sodium chloride, pH 7.3, 30 % glycerol, and 0.01 % sodium azide.
Preservative:	Sodium azide
Precaution of Use:	This product contains Sodium azide: a POISONOUS AND HAZARDOUS SUBSTANCE which should be handled by trained staff only.
Storage:	-20 °C
Storage Comment:	Shipped at 4°C. Upon delivery aliquot and store at -20°C for one year. Avoid freeze/thaw cycles.
Expiry Date:	12 months

Images



Western Blotting

Image 1. Western blot analysis of Adenylate Cyclase 5/6 expression in HeLa (A), Raw264.7 (B), PC12 (C), rat brain (D) whole cell lysates.



Immunofluorescence

Image 2. Immunofluorescent analysis of Adenylate Cyclase 5/6 staining in Raw264.7 cells. Formalin-fixed cells were permeabilized with 0.1% Triton X-100 in TBS for 5-10 minutes and blocked with 3% BSA-PBS for 30 minutes at room temperature. Cells were probed with the primary antibody in 3% BSA-PBS and incubated overnight at 4 °C in a humidified chamber. Cells were washed with PBST and incubated with a DyLight 594-conjugated secondary antibody (red) in PBS at room temperature in the dark. DAPI was used to stain the cell nuclei (blue).