

Datasheet for ABIN7294912
anti-SLC25A5 antibody (Center)[Go to Product page](#)

1 Image

Overview

Quantity:	100 µL
Target:	SLC25A5
Binding Specificity:	Center
Reactivity:	Human, Rat, Cow, Monkey, Sheep
Host:	Rabbit
Clonality:	Polyclonal
Conjugate:	This SLC25A5 antibody is un-conjugated
Application:	Western Blotting (WB)

Product Details

Immunogen:	KLH-conjugated synthetic peptide encompassing a sequence within the center region of human ANT2.
Specificity:	Recognizes endogenous levels of ANT2 protein.
Characteristics:	Rabbit polyclonal antibody to ANT2
Purification:	The antibody was purified by immunogen affinity chromatography.

Target Details

Target:	SLC25A5
Alternative Name:	ANT2 (SLC25A5 Products)
Background:	ANT2, ADP/ATP translocase 2, ADP,ATP carrier protein 2, ADP,ATP carrier protein, fibroblast

Target Details

	isoform, Adenine nucleotide translocator 2, ANT 2, Solute carrier family 25 member 5
Gene ID:	292, 25176
UniProt:	P05141 , Q09073

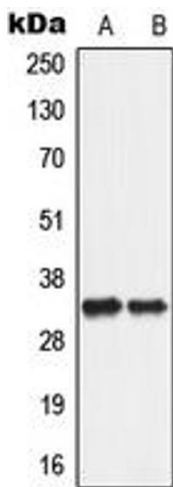
Application Details

Application Notes:	WB (1:500 - 1:1000)
Restrictions:	For Research Use only

Handling

Format:	Liquid
Buffer:	Liquid in 0.42 % Potassium phosphate, 0.87 % Sodium chloride, pH 7.3, 30 % glycerol, and 0.01 % sodium azide.
Preservative:	Sodium azide
Precaution of Use:	This product contains Sodium azide: a POISONOUS AND HAZARDOUS SUBSTANCE which should be handled by trained staff only.
Storage:	-20 °C
Storage Comment:	Shipped at 4°C. Upon delivery aliquot and store at -20°C for one year. Avoid freeze/thaw cycles.
Expiry Date:	12 months

Images



Western Blotting

Image 1. Western blot analysis of ANT2 expression in A549 (A), PC12 (B) whole cell lysates.