

Datasheet for ABIN7294924

anti-APAF1 antibody (C-Term)**3** Images[Go to Product page](#)

Overview

Quantity:	100 µL
Target:	APAF1
Binding Specificity:	C-Term
Reactivity:	Human
Host:	Rabbit
Clonality:	Polyclonal
Conjugate:	This APAF1 antibody is un-conjugated
Application:	Western Blotting (WB), Immunohistochemistry (IHC), Immunofluorescence (IF), Immunochromatography (IC)

Product Details

Immunogen:	KLH-conjugated synthetic peptide encompassing a sequence within the C-term region of human APAF-1.
Specificity:	Recognizes endogenous levels of APAF-1 protein.
Characteristics:	Rabbit polyclonal antibody to APAF-1
Purification:	The antibody was purified by immunogen affinity chromatography.

Target Details

Target:	APAF1
Alternative Name:	APAF-1 (APAF1 Products)

Target Details

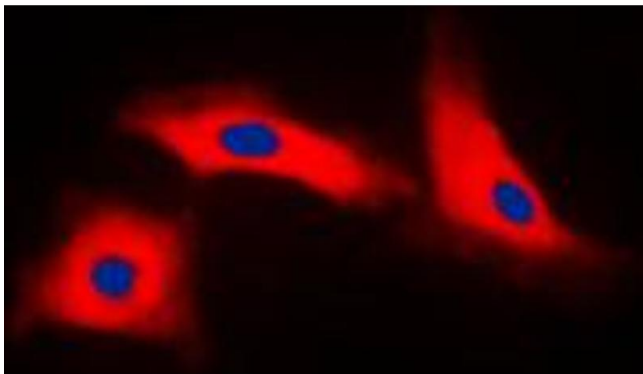
Background:	APAF1-interacting protein, APIP, APIP2, CGI-29 protein, MMRP19, dJ179L10.2, likely ortholog of mouse monocyte macrophage 19
Gene ID:	317
UniProt:	O14727
Pathways:	p53 Signaling , Apoptosis , Caspase Cascade in Apoptosis , Tube Formation , Positive Regulation of Endopeptidase Activity

Application Details

Application Notes:	WB (1:500 - 1:1000), IH (1:100 - 1:200), IF/IC (1:100 - 1:500)
Restrictions:	For Research Use only

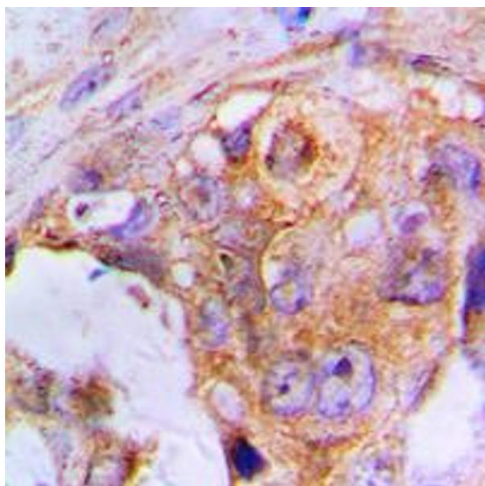
Handling

Format:	Liquid
Buffer:	Liquid in 0.42 % Potassium phosphate, 0.87 % Sodium chloride, pH 7.3, 30 % glycerol, and 0.01 % sodium azide.
Preservative:	Sodium azide
Precaution of Use:	This product contains Sodium azide: a POISONOUS AND HAZARDOUS SUBSTANCE which should be handled by trained staff only.
Storage:	-20 °C
Storage Comment:	Shipped at 4°C. Upon delivery aliquot and store at -20°C for one year. Avoid freeze/thaw cycles.
Expiry Date:	12 months



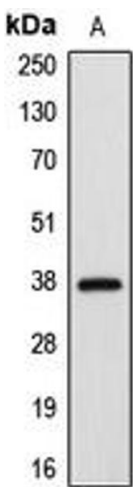
Immunofluorescence

Image 1. Immunofluorescent analysis of APAF-1 staining in HeLa cells. Formalin-fixed cells were permeabilized with 0.1% Triton X-100 in TBS for 5-10 minutes and blocked with 3% BSA-PBS for 30 minutes at room temperature. Cells were probed with the primary antibody in 3% BSA-PBS and incubated overnight at 4 °C in a humidified chamber. Cells were washed with PBST and incubated with a DyLight 594-conjugated secondary antibody (red) in PBS at room temperature in the dark. DAPI was used to stain the cell nuclei (blue).



Immunohistochemistry

Image 2. Immunohistochemical analysis of APAF-1 staining in human lung cancer formalin fixed paraffin embedded tissue section. The section was pre-treated using heat mediated antigen retrieval with sodium citrate buffer (pH 6.0). The section was then incubated with the antibody at room temperature and detected using an HRP conjugated compact polymer system. DAB was used as the chromogen. The section was then counterstained with haematoxylin and mounted with DPX.



Western Blotting

Image 3. Western blot analysis of APAF-1 expression in HeLa (A) whole cell lysates.