



Datasheet for ABIN7294938
anti-APLP2 antibody (Center)



[Go to Product page](#)

2 Images

Overview

Quantity:	100 µL
Target:	APLP2
Binding Specificity:	Center
Reactivity:	Human, Mouse, Rat, Monkey
Host:	Rabbit
Clonality:	Polyclonal
Conjugate:	This APLP2 antibody is un-conjugated
Application:	Western Blotting (WB), Immunohistochemistry (IHC)

Product Details

Immunogen:	KLH-conjugated synthetic peptide encompassing a sequence within the center region of human APLP2.
Specificity:	Recognizes endogenous levels of APLP2 protein.
Characteristics:	Rabbit polyclonal antibody to APLP2
Purification:	The antibody was purified by immunogen affinity chromatography.

Target Details

Target:	APLP2
Alternative Name:	APLP2 (APLP2 Products)
Background:	APPL2, Amyloid-like protein 2, APLP-2, APPH, Amyloid protein homolog, CDEI box-binding

Target Details

	protein, CDEBP
Gene ID:	334, 11804
UniProt:	Q06481 , Q06335 , P15943
Pathways:	EGFR Signaling Pathway , Transition Metal Ion Homeostasis , Feeding Behaviour

Application Details

Application Notes: WB (1:500 - 1:1000), IH (1:100 - 1:200)

Restrictions: For Research Use only

Handling

Format: Liquid

Buffer: Liquid in 0.42 % Potassium phosphate, 0.87 % Sodium chloride, pH 7.3, 30 % glycerol, and 0.01 % sodium azide.

Preservative: Sodium azide

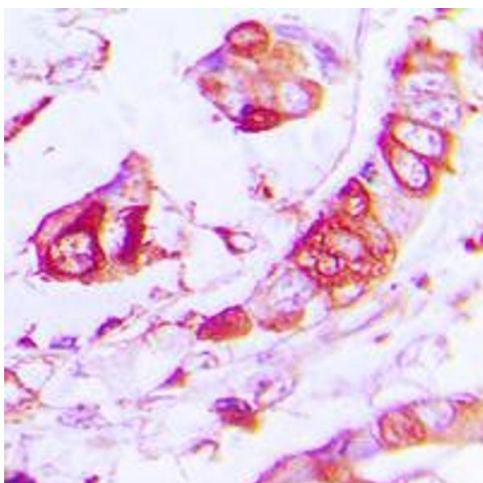
Precaution of Use: This product contains Sodium azide: a POISONOUS AND HAZARDOUS SUBSTANCE which should be handled by trained staff only.

Storage: -20 °C

Storage Comment: Shipped at 4°C. Upon delivery aliquot and store at -20°C for one year. Avoid freeze/thaw cycles.

Expiry Date: 12 months

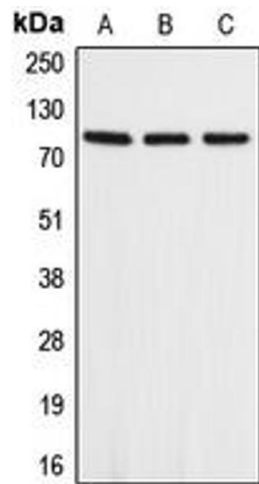
Images



Immunohistochemistry

Image 1. Immunohistochemical analysis of APLP2 staining in human lung cancer formalin fixed paraffin embedded tissue section. The section was pre-treated using heat mediated antigen retrieval with sodium citrate buffer (pH 6.0). The section was then incubated with the antibody at room temperature and detected using an HRP conjugated compact polymer system. DAB was used as the chromogen. The section was then counterstained with

haematoxylin and mounted with DPX.



Western Blotting

Image 2. Western blot analysis of APLP2 expression in A549 (A), mouse heart (B), rat heart (C) whole cell lysates.