



Datasheet for ABIN7294994  
**anti-BACH1 antibody (Center)**



[Go to Product page](#)

3 Images

Overview

Quantity:	100 µL
Target:	BACH1
Binding Specificity:	Center
Reactivity:	Human, Monkey
Host:	Rabbit
Clonality:	Polyclonal
Conjugate:	This BACH1 antibody is un-conjugated
Application:	Western Blotting (WB), Immunohistochemistry (IHC), Immunofluorescence (IF), Immunoprecipitation (IP), Immunochromatography (IC)

Product Details

Immunogen:	KLH-conjugated synthetic peptide encompassing a sequence within the center region of human BACH1.
Specificity:	Recognizes endogenous levels of BACH1 protein.
Characteristics:	Rabbit polyclonal antibody to BACH1
Purification:	The antibody was purified by immunogen affinity chromatography.

Target Details

Target:	BACH1
Alternative Name:	BACH1 ( <a href="#">BACH1 Products</a> )

## Target Details

Background: Transcription regulator protein BACH1, BTB and CNC homolog 1, HA2303

Gene ID: 571

UniProt: [O14867](#)

## Application Details

Application Notes: WB (1:500 - 1:1000), IH (1:100 - 1:200), IF/IC (1:100 - 1:500), IP (1:10 - 1:100)

Restrictions: For Research Use only

## Handling

Format: Liquid

Buffer: Liquid in 0.42 % Potassium phosphate, 0.87 % Sodium chloride, pH 7.3, 30 % glycerol, and 0.01 % sodium azide.

Preservative: Sodium azide

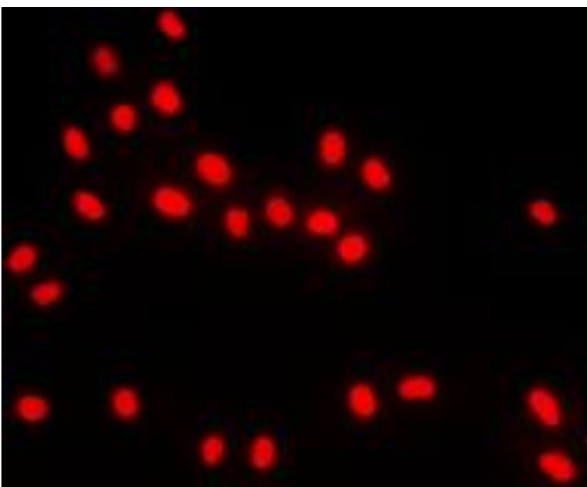
Precaution of Use: This product contains Sodium azide: a POISONOUS AND HAZARDOUS SUBSTANCE which should be handled by trained staff only.

Storage: -20 °C

Storage Comment: Shipped at 4°C. Upon delivery aliquot and store at -20°C for one year. Avoid freeze/thaw cycles.

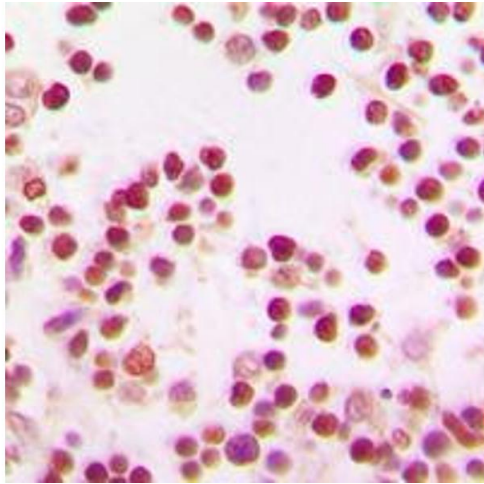
Expiry Date: 12 months

## Images



### Immunofluorescence

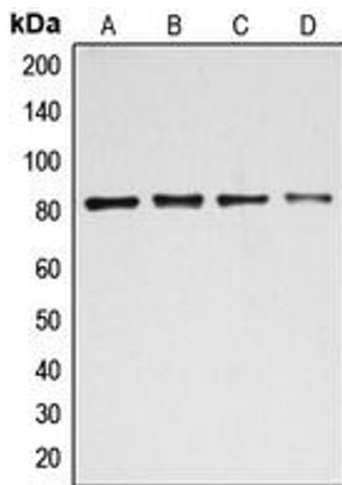
**Image 1.** Immunofluorescent analysis of BACH1 staining in MCF7 cells. Formalin-fixed cells were permeabilized with 0.1% Triton X-100 in TBS for 5-10 minutes and blocked with 3% BSA-PBS for 30 minutes at room temperature. Cells were probed with the primary antibody in 3% BSA-PBS and incubated overnight at 4 °C in a humidified chamber. Cells were washed with PBST and incubated with a DyLight 594-conjugated secondary antibody (red) in PBS at room temperature in the dark. DAPI was used to stain the cell



nuclei (blue).

### Immunohistochemistry

**Image 2.** Immunohistochemical analysis of BACH1 staining in human tonsil formalin fixed paraffin embedded tissue section. The section was pre-treated using heat mediated antigen retrieval with sodium citrate buffer (pH 6.0). The section was then incubated with the antibody at room temperature and detected using an HRP conjugated compact polymer system. DAB was used as the chromogen. The section was then counterstained with haematoxylin and mounted with DPX.



### Western Blotting

**Image 3.** Western blot analysis of BACH1 expression in HEK293T (A), MCF7 (B), K562 (C), HeLa (D) whole cell lysates.