

Datasheet for ABIN7295034
anti-ZFP36L1 antibody (Center)[Go to Product page](#)

2 Images

Overview

Quantity:	100 µL
Target:	ZFP36L1
Binding Specificity:	Center
Reactivity:	Human, Mouse, Rat
Host:	Rabbit
Clonality:	Polyclonal
Conjugate:	This ZFP36L1 antibody is un-conjugated
Application:	Western Blotting (WB), Immunohistochemistry (IHC), Immunoprecipitation (IP)

Product Details

Immunogen:	KLH-conjugated synthetic peptide encompassing a sequence within the center region of human ZFP36L1.
Specificity:	Recognizes endogenous levels of ZFP36L1 protein.
Characteristics:	Rabbit polyclonal antibody to ZFP36L1
Purification:	The antibody was purified by immunogen affinity chromatography.

Target Details

Target:	ZFP36L1
Alternative Name:	ZFP36L1 (ZFP36L1 Products)
Background:	BERG36, BRF1, ERF1, RNF162B, TIS11B, Zinc finger protein 36, C3H1 type-like 1, Butyrate

Target Details

	response factor 1, EGF-response factor 1, ERF-1, Protein TIS11B
Gene ID:	677, 12192, 29344
UniProt:	Q07352 , P23950 , P17431

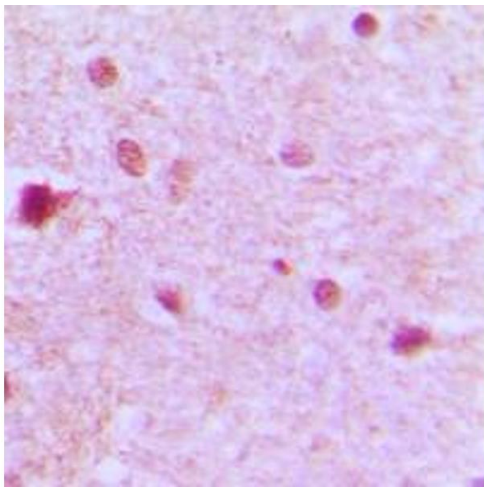
Application Details

Application Notes:	WB (1:500 - 1:1000), IH (1:100 - 1:200), IP (1:10 - 1:100)
Restrictions:	For Research Use only

Handling

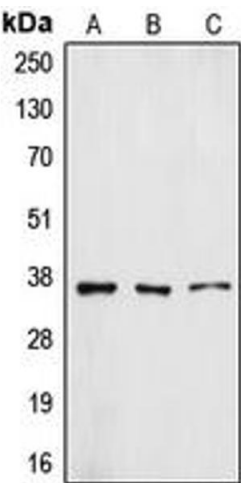
Format:	Liquid
Buffer:	Liquid in 0.42 % Potassium phosphate, 0.87 % Sodium chloride, pH 7.3, 30 % glycerol, and 0.01 % sodium azide.
Preservative:	Sodium azide
Precaution of Use:	This product contains Sodium azide: a POISONOUS AND HAZARDOUS SUBSTANCE which should be handled by trained staff only.
Storage:	-20 °C
Storage Comment:	Shipped at 4°C. Upon delivery aliquot and store at -20°C for one year. Avoid freeze/thaw cycles.
Expiry Date:	12 months

Images



Immunohistochemistry

Image 1. Immunohistochemical analysis of ZFP36L1 staining in human brain formalin fixed paraffin embedded tissue section. The section was pre-treated using heat mediated antigen retrieval with sodium citrate buffer (pH 6.0). The section was then incubated with the antibody at room temperature and detected using an HRP conjugated compact polymer system. DAB was used as the chromogen. The section was then counterstained with haematoxylin and mounted with DPX.



Western Blotting

Image 2. Western blot analysis of ZFP36L1 expression in A431 (A), HuvEc (B), A549 (C) whole cell lysates.