

Datasheet for ABIN7295038
anti-BST1 antibody (Center)



[Go to Product page](#)

2 Images

Overview

Quantity:	100 µL
Target:	BST1
Binding Specificity:	Center
Reactivity:	Human, Mouse, Rat, Monkey
Host:	Rabbit
Clonality:	Polyclonal
Conjugate:	This BST1 antibody is un-conjugated
Application:	Western Blotting (WB), Immunofluorescence (IF), Immunochromatography (IC)

Product Details

Immunogen:	KLH-conjugated synthetic peptide encompassing a sequence within the center region of human CD157.
Specificity:	Recognizes endogenous levels of CD157 protein.
Characteristics:	Rabbit polyclonal antibody to CD157
Purification:	The antibody was purified by immunogen affinity chromatography.

Target Details

Target:	BST1
Alternative Name:	CD157 (BST1 Products)
Background:	ADP-ribosyl cyclase/cyclic ADP-ribose hydrolase 2, ADP-ribosyl cyclase 2, Bone marrow

Target Details

	stromal antigen 1, BST-1, Cyclic ADP-ribose hydrolase 2, cADPr hydrolase 2, CD157
Gene ID:	683, 12182, 81506
UniProt:	Q10588 , Q64277 , Q63072

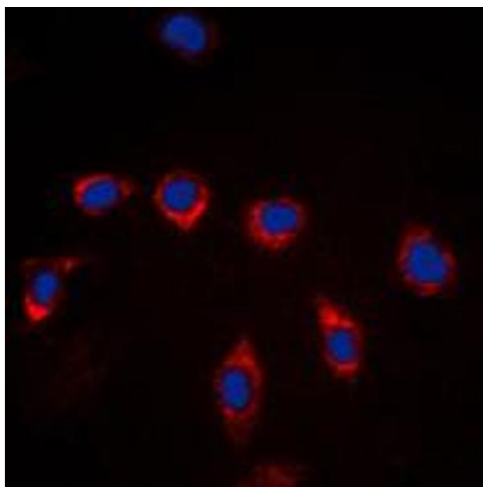
Application Details

Application Notes:	WB (1:500 - 1:1000), IF/IC (1:100 - 1:500)
Restrictions:	For Research Use only

Handling

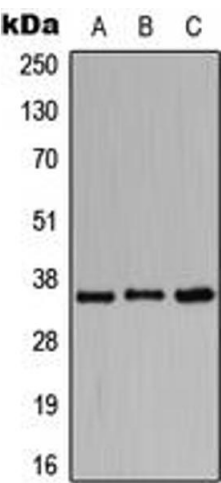
Format:	Liquid
Buffer:	Liquid in 0.42 % Potassium phosphate, 0.87 % Sodium chloride, pH 7.3, 30 % glycerol, and 0.01 % sodium azide.
Preservative:	Sodium azide
Precaution of Use:	This product contains Sodium azide: a POISONOUS AND HAZARDOUS SUBSTANCE which should be handled by trained staff only.
Storage:	-20 °C
Storage Comment:	Shipped at 4°C. Upon delivery aliquot and store at -20°C for one year. Avoid freeze/thaw cycles.
Expiry Date:	12 months

Images



Immunofluorescence

Image 1. Immunofluorescent analysis of CD157 staining in Raw264.7 cells. Formalin-fixed cells were permeabilized with 0.1% Triton X-100 in TBS for 5-10 minutes and blocked with 3% BSA-PBS for 30 minutes at room temperature. Cells were probed with the primary antibody in 3% BSA-PBS and incubated overnight at 4 °C in a humidified chamber. Cells were washed with PBST and incubated with a DyLight 594-conjugated secondary antibody (red) in PBS at room temperature in the dark. DAPI was used to stain the cell



nuclei (blue).

Western Blotting

Image 2. Western blot analysis of CD157 expression in HeLa (A), Raw264.7 (B), H9C2 (C) whole cell lysates.