

Datasheet for ABIN7295054
anti-CA1 antibody (Center)



[Go to Product page](#)

2 Images

Overview

Quantity:	100 µL
Target:	CA1
Binding Specificity:	Center
Reactivity:	Human, Rat, Mouse, Monkey
Host:	Rabbit
Clonality:	Polyclonal
Conjugate:	This CA1 antibody is un-conjugated
Application:	Western Blotting (WB), Immunohistochemistry (IHC)

Product Details

Immunogen:	KLH-conjugated synthetic peptide encompassing a sequence within the center region of human Carbonic Anhydrase 1.
Specificity:	Recognizes endogenous levels of Carbonic Anhydrase 1 protein.
Characteristics:	Rabbit polyclonal antibody to Carbonic Anhydrase 1
Purification:	The antibody was purified by immunogen affinity chromatography.

Target Details

Target:	CA1
Alternative Name:	Carbonic Anhydrase 1 (CA1 Products)
Background:	Carbonic anhydrase 1, Carbonate dehydratase I, Carbonic anhydrase B, CAB, Carbonic

Target Details

	anhydrase I, CA-I
Gene ID:	759, 12346, 310218
UniProt:	P00915 , P13634 , B0BNN3

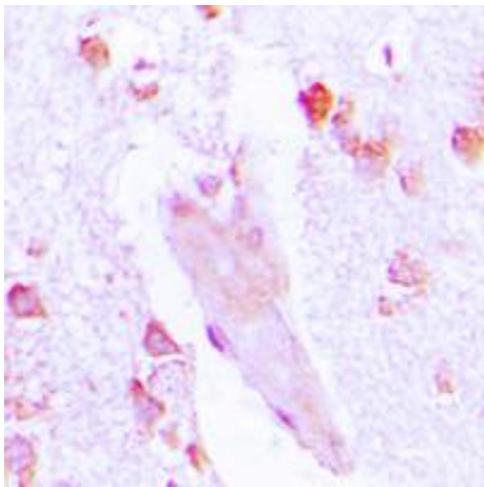
Application Details

Application Notes:	WB (1:500 - 1:1000), IH (1:100 - 1:200)
Restrictions:	For Research Use only

Handling

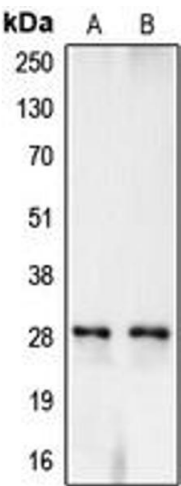
Format:	Liquid
Buffer:	Liquid in 0.42 % Potassium phosphate, 0.87 % Sodium chloride, pH 7.3, 30 % glycerol, and 0.01 % sodium azide.
Preservative:	Sodium azide
Precaution of Use:	This product contains Sodium azide: a POISONOUS AND HAZARDOUS SUBSTANCE which should be handled by trained staff only.
Storage:	-20 °C
Storage Comment:	Shipped at 4°C. Upon delivery aliquot and store at -20°C for one year. Avoid freeze/thaw cycles.
Expiry Date:	12 months

Images



Immunohistochemistry

Image 1. Immunohistochemical analysis of Carbonic Anhydrase 1 staining in human brain formalin fixed paraffin embedded tissue section. The section was pre-treated using heat mediated antigen retrieval with sodium citrate buffer (pH 6.0). The section was then incubated with the antibody at room temperature and detected using an HRP conjugated compact polymer system. DAB was used as the chromogen. The section was then counterstained with haematoxylin and mounted with DPX.



Western Blotting

Image 2. Western blot analysis of Carbonic Anhydrase 1 expression in TF1 (A), K562 (B) whole cell lysates.