



[Go to Product page](#)

Datasheet for ABIN7295108

anti-Caspase 5 p20 antibody (Center)

1 Image

Overview

Quantity:	100 µL
Target:	Caspase 5 p20
Binding Specificity:	Center
Reactivity:	Human, Mouse, Rat
Host:	Rabbit
Clonality:	Polyclonal
Conjugate:	This Caspase 5 p20 antibody is un-conjugated
Application:	Western Blotting (WB)

Product Details

Immunogen:	KLH-conjugated synthetic peptide encompassing a sequence within the center region of human Caspase 5 p20.
Specificity:	Recognizes endogenous levels of Caspase 5 p20 protein.
Characteristics:	Rabbit polyclonal antibody to Caspase 5 p20
Purification:	The antibody was purified by immunogen affinity chromatography.

Target Details

Target:	Caspase 5 p20
Abstract:	Caspase 5 p20 Products
Background:	ICH3, Caspase-5, CASP-5, ICE(rel)-III, Protease ICH-3, Protease TY

Target Details

Gene ID: 838

UniProt: [P51878](#)

Application Details

Application Notes: WB (1:500 - 1:1000)

Restrictions: For Research Use only

Handling

Format: Liquid

Buffer: Liquid in 0.42 % Potassium phosphate, 0.87 % Sodium chloride, pH 7.3, 30 % glycerol, and 0.01 % sodium azide.

Preservative: Sodium azide

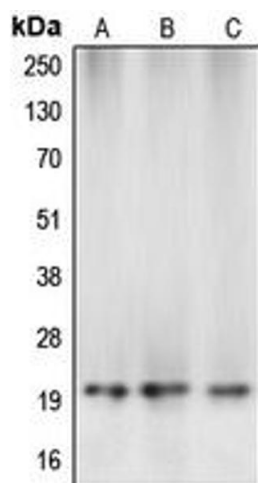
Precaution of Use: This product contains Sodium azide: a POISONOUS AND HAZARDOUS SUBSTANCE which should be handled by trained staff only.

Storage: -20 °C

Storage Comment: Shipped at 4°C. Upon delivery aliquot and store at -20°C for one year. Avoid freeze/thaw cycles.

Expiry Date: 12 months

Images



Western Blotting

Image 1. Western blot analysis of Caspase 5 p20 expression in MCF7 (A), mouse kidney (B), rat liver (C) whole cell lysates.