



Datasheet for ABIN7295130
anti-Caspase 10 antibody (C-Term)



[Go to Product page](#)

3 Images

Overview

Quantity:	100 µL
Target:	Caspase 10 (CASP10)
Binding Specificity:	C-Term
Reactivity:	Human, Mouse, Rat
Host:	Rabbit
Clonality:	Polyclonal
Conjugate:	This Caspase 10 antibody is un-conjugated
Application:	Western Blotting (WB), Immunohistochemistry (IHC), Immunofluorescence (IF), Immunochromatography (IC)

Product Details

Immunogen:	KLH-conjugated synthetic peptide encompassing a sequence within the C-term region of human Caspase 10.
Specificity:	Recognizes endogenous levels of Caspase 10 protein.
Characteristics:	Rabbit polyclonal antibody to Caspase 10
Purification:	The antibody was purified by immunogen affinity chromatography.

Target Details

Target:	Caspase 10 (CASP10)
Alternative Name:	Caspase 10 (CASP10 Products)

Target Details

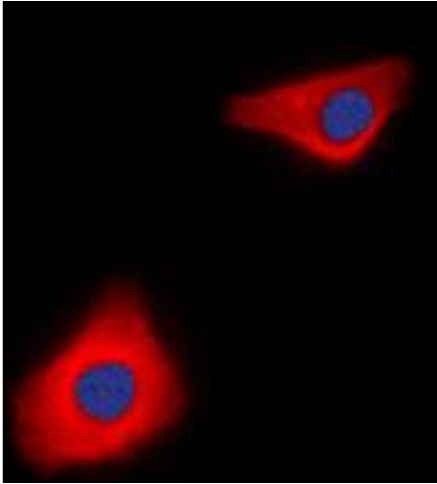
Background:	ALPS2, apoptotic protease Mch-4, CASP-10, CASPA, caspase-10, FADD-like ICE2, FAS-associated death domain protein interleukin-1B-convert
Gene ID:	843
UniProt:	Q92851
Pathways:	Apoptosis, Caspase Cascade in Apoptosis

Application Details

Application Notes:	WB (1:500 - 1:1000), IH (1:100 - 1:200), IF/IC (1:100 - 1:500)
Restrictions:	For Research Use only

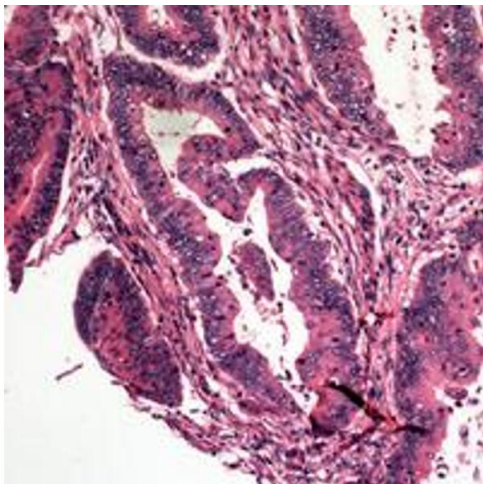
Handling

Format:	Liquid
Buffer:	Liquid in 0.42 % Potassium phosphate, 0.87 % Sodium chloride, pH 7.3, 30 % glycerol, and 0.01 % sodium azide.
Preservative:	Sodium azide
Precaution of Use:	This product contains Sodium azide: a POISONOUS AND HAZARDOUS SUBSTANCE which should be handled by trained staff only.
Storage:	-20 °C
Storage Comment:	Shipped at 4°C. Upon delivery aliquot and store at -20°C for one year. Avoid freeze/thaw cycles.
Expiry Date:	12 months



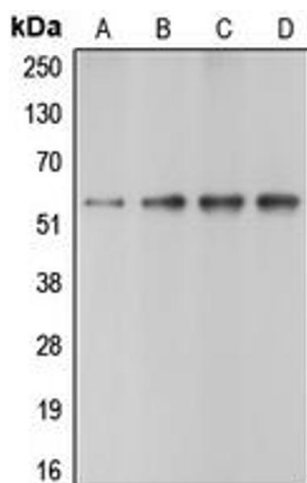
Immunofluorescence

Image 1. Immunofluorescent analysis of Caspase 10 staining in Jurkat cells. Formalin-fixed cells were permeabilized with 0.1% Triton X-100 in TBS for 5-10 minutes and blocked with 3% BSA-PBS for 30 minutes at room temperature. Cells were probed with the primary antibody in 3% BSA-PBS and incubated overnight at 4 °C in a humidified chamber. Cells were washed with PBST and incubated with a DyLight 594-conjugated secondary antibody (red) in PBS at room temperature in the dark. DAPI was used to stain the cell nuclei (blue).



Immunohistochemistry

Image 2. Immunohistochemical analysis of Caspase 10 staining in human colon cancer formalin fixed paraffin embedded tissue section. The section was pre-treated using heat mediated antigen retrieval with sodium citrate buffer (pH 6.0). The section was then incubated with the antibody at room temperature and detected using an HRP conjugated compact polymer system. AEC was used as the chromogen. The section was then counterstained with haematoxylin and mounted with DPX.



Western Blotting

Image 3. Western blot analysis of Caspase 10 expression in HeLa (A), Jurkat (B), mouse heart (C), rat heart (D) whole cell lysates.