



[Go to Product page](#)

Datasheet for ABIN7295148

anti-CBLN1 antibody (C-Term)

1 Image

Overview

Quantity:	100 µL
Target:	CBLN1
Binding Specificity:	C-Term
Reactivity:	Human, Rat, Mouse, Cow, Monkey, Pig
Host:	Rabbit
Clonality:	Polyclonal
Conjugate:	This CBLN1 antibody is un-conjugated
Application:	Western Blotting (WB)

Product Details

Immunogen:	KLH-conjugated synthetic peptide encompassing a sequence within the C-term region of human Cerebellin 1.
Specificity:	Recognizes endogenous levels of Cerebellin 1 protein.
Characteristics:	Rabbit polyclonal antibody to Cerebellin 1
Purification:	The antibody was purified by immunogen affinity chromatography.

Target Details

Target:	CBLN1
Alternative Name:	Cerebellin 1 (CBLN1 Products)
Background:	Cerebellin-1, Precerebellin

Target Details

Gene ID: 869, 12404, 498922

UniProt: [P23435](#), [Q9R171](#), [P63182](#)

Application Details

Application Notes: WB (1:500 - 1:1000)

Restrictions: For Research Use only

Handling

Format: Liquid

Buffer: Liquid in 0.42 % Potassium phosphate, 0.87 % Sodium chloride, pH 7.3, 30 % glycerol, and 0.01 % sodium azide.

Preservative: Sodium azide

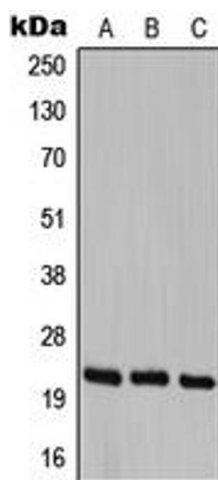
Precaution of Use: This product contains Sodium azide: a POISONOUS AND HAZARDOUS SUBSTANCE which should be handled by trained staff only.

Storage: -20 °C

Storage Comment: Shipped at 4°C. Upon delivery aliquot and store at -20°C for one year. Avoid freeze/thaw cycles.

Expiry Date: 12 months

Images



Western Blotting

Image 1. Western blot analysis of Cerebellin 1 expression in HEK293T (A), SP2/0 (B), PC12 (C) whole cell lysates.