

Datasheet for ABIN7295162
anti-Cyclin G1 antibody (Center)

2 Images

[Go to Product page](#)

Overview

Quantity:	100 µL
Target:	Cyclin G1 (CCNG1)
Binding Specificity:	Center
Reactivity:	Human, Mouse, Rat, Cow, Pig
Host:	Rabbit
Clonality:	Polyclonal
Conjugate:	This Cyclin G1 antibody is un-conjugated
Application:	Western Blotting (WB), Immunohistochemistry (IHC)

Product Details

Immunogen:	KLH-conjugated synthetic peptide encompassing a sequence within the center region of human Cyclin G1.
Specificity:	Recognizes endogenous levels of Cyclin G1 protein.
Characteristics:	Rabbit polyclonal antibody to Cyclin G1
Purification:	The antibody was purified by immunogen affinity chromatography.

Target Details

Target:	Cyclin G1 (CCNG1)
Alternative Name:	Cyclin G1 (CCNG1 Products)
Background:	CCNG, CYCG1, Cyclin-G1, Cyclin-G

Target Details

Gene ID:	900, 12450, 25405
UniProt:	P51959 , P51945 , P39950
Pathways:	p53 Signaling

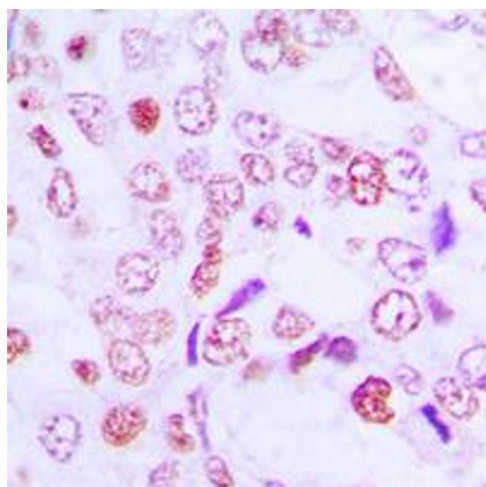
Application Details

Application Notes:	WB (1:500 - 1:1000), IH (1:100 - 1:200)
Restrictions:	For Research Use only

Handling

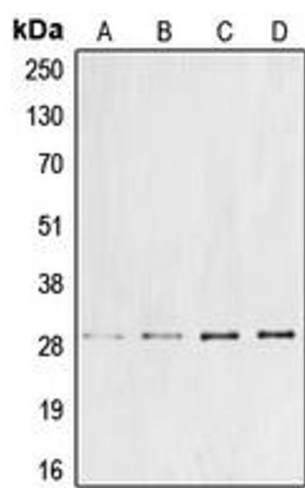
Format:	Liquid
Buffer:	Liquid in 0.42 % Potassium phosphate, 0.87 % Sodium chloride, pH 7.3, 30 % glycerol, and 0.01 % sodium azide.
Preservative:	Sodium azide
Precaution of Use:	This product contains Sodium azide: a POISONOUS AND HAZARDOUS SUBSTANCE which should be handled by trained staff only.
Storage:	-20 °C
Storage Comment:	Shipped at 4°C. Upon delivery aliquot and store at -20°C for one year. Avoid freeze/thaw cycles.
Expiry Date:	12 months

Images



Immunohistochemistry

Image 1. Immunohistochemical analysis of Cyclin G1 staining in human lung cancer formalin fixed paraffin embedded tissue section. The section was pre-treated using heat mediated antigen retrieval with sodium citrate buffer (pH 6.0). The section was then incubated with the antibody at room temperature and detected using an HRP conjugated compact polymer system. DAB was used as the chromogen. The section was then counterstained with haematoxylin and mounted with DPX.



Western Blotting

Image 2. Western blot analysis of Cyclin G1 expression in DLD (A), Jurkat (B), mouse liver (C), rat liver (D) whole cell lysates.