

Datasheet for ABIN7295164  
**anti-CCT6A antibody (Center)**[Go to Product page](#)

## 1 Image

## Overview

Quantity:	100 µL
Target:	CCT6A
Binding Specificity:	Center
Reactivity:	Human, Mouse, Rat, Cow, Rabbit
Host:	Rabbit
Clonality:	Polyclonal
Conjugate:	This CCT6A antibody is un-conjugated
Application:	Western Blotting (WB)

## Product Details

Immunogen:	KLH-conjugated synthetic peptide encompassing a sequence within the center region of human TCP1 zeta.
Specificity:	Recognizes endogenous levels of TCP1 zeta protein.
Characteristics:	Rabbit polyclonal antibody to TCP1 zeta
Purification:	The antibody was purified by immunogen affinity chromatography.

## Target Details

Target:	CCT6A
Alternative Name:	TCP1 zeta ( <a href="#">CCT6A Products</a> )
Background:	CCT6, CCTZ, T-complex protein 1 subunit zeta, TCP-1-zeta, Acute morphine dependence-

### Target Details

	related protein 2, CCT-zeta-1, HTR3, Tcp20
Gene ID:	908, 12466
UniProt:	<a href="#">P40227</a> , <a href="#">P80317</a>

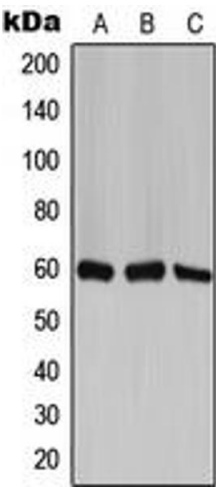
### Application Details

Application Notes:	WB (1:500 - 1:1000)
Restrictions:	For Research Use only

### Handling

Format:	Liquid
Buffer:	Liquid in 0.42 % Potassium phosphate, 0.87 % Sodium chloride, pH 7.3, 30 % glycerol, and 0.01 % sodium azide.
Preservative:	Sodium azide
Precaution of Use:	This product contains Sodium azide: a POISONOUS AND HAZARDOUS SUBSTANCE which should be handled by trained staff only.
Storage:	-20 °C
Storage Comment:	Shipped at 4°C. Upon delivery aliquot and store at -20°C for one year. Avoid freeze/thaw cycles.
Expiry Date:	12 months

### Images



#### Western Blotting

**Image 1.** Western blot analysis of TCP1 zeta expression in H1299 (A), mouse brain (B), PC12 (C) whole cell lysates.