

Datasheet for ABIN7295170
anti-CD3D antibody (Center)



[Go to Product page](#)

2 Images

Overview

Quantity:	100 µL
Target:	CD3D
Binding Specificity:	Center
Reactivity:	Human, Monkey
Host:	Rabbit
Clonality:	Polyclonal
Conjugate:	This CD3D antibody is un-conjugated
Application:	Western Blotting (WB), Immunofluorescence (IF), Immunochromatography (IC)

Product Details

Immunogen:	KLH-conjugated synthetic peptide encompassing a sequence within the center region of human CD3d.
Specificity:	Recognizes endogenous levels of CD3d protein.
Characteristics:	Rabbit polyclonal antibody to CD3d
Purification:	The antibody was purified by immunogen affinity chromatography.

Target Details

Target:	CD3D
Alternative Name:	CD3d (CD3D Products)
Background:	T3D, T-cell surface glycoprotein CD3 delta chain, T-cell receptor T3 delta chain, CD3d

Target Details

Gene ID:	915
UniProt:	P04234
Pathways:	TCR Signaling , CXCR4-mediated Signaling Events

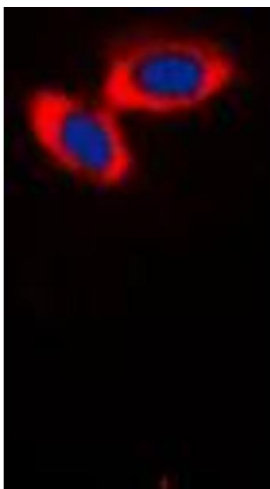
Application Details

Application Notes:	WB (1:500 - 1:1000), IF/IC (1:100 - 1:500)
Restrictions:	For Research Use only

Handling

Format:	Liquid
Buffer:	Liquid in 0.42 % Potassium phosphate, 0.87 % Sodium chloride, pH 7.3, 30 % glycerol, and 0.01 % sodium azide.
Preservative:	Sodium azide
Precaution of Use:	This product contains Sodium azide: a POISONOUS AND HAZARDOUS SUBSTANCE which should be handled by trained staff only.
Storage:	-20 °C
Storage Comment:	Shipped at 4°C. Upon delivery aliquot and store at -20°C for one year. Avoid freeze/thaw cycles.
Expiry Date:	12 months

Images



Immunofluorescence

Image 1. Immunofluorescent analysis of CD3d staining in Jurkat cells. Formalin-fixed cells were permeabilized with 0.1% Triton X-100 in TBS for 5-10 minutes and blocked with 3% BSA-PBS for 30 minutes at room temperature. Cells were probed with the primary antibody in 3% BSA-PBS and incubated overnight at 4 °C in a humidified chamber. Cells were washed with PBST and incubated with a DyLight 594-conjugated secondary antibody (red) in PBS at room temperature in the dark. DAPI was used to stain the cell

nuclei (blue).

Western Blotting

Image 2. Western blot analysis of CD3d expression in CCRFCEM (A), Jurkat (B), HuT78 (C) whole cell lysates.

