

Datasheet for ABIN7295200
anti-CDC20 antibody (Center)



[Go to Product page](#)

1 Image

Overview

Quantity:	100 µL
Target:	CDC20
Binding Specificity:	Center
Reactivity:	Human, Pig, Monkey
Host:	Rabbit
Clonality:	Polyclonal
Conjugate:	This CDC20 antibody is un-conjugated
Application:	Western Blotting (WB)

Product Details

Immunogen:	KLH-conjugated synthetic peptide encompassing a sequence within the center region of human CDC20.
Specificity:	Recognizes endogenous levels of CDC20 protein.
Characteristics:	Rabbit polyclonal antibody to CDC20
Purification:	The antibody was purified by immunogen affinity chromatography.

Target Details

Target:	CDC20
Alternative Name:	CDC20 (CDC20 Products)
Background:	Cell division cycle protein 20 homolog, p55CDC

Target Details

Gene ID:	991
UniProt:	Q12834

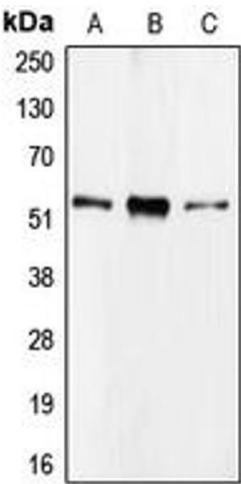
Application Details

Application Notes:	WB (1:500 - 1:1000), IH (1:100 - 1:200)
Restrictions:	For Research Use only

Handling

Format:	Liquid
Buffer:	Liquid in 0.42 % Potassium phosphate, 0.87 % Sodium chloride, pH 7.3, 30 % glycerol, and 0.01 % sodium azide.
Preservative:	Sodium azide
Precaution of Use:	This product contains Sodium azide: a POISONOUS AND HAZARDOUS SUBSTANCE which should be handled by trained staff only.
Storage:	-20 °C
Storage Comment:	Shipped at 4°C. Upon delivery aliquot and store at -20°C for one year. Avoid freeze/thaw cycles.
Expiry Date:	12 months

Images



Western Blotting

Image 1. Western blot analysis of CDC20 expression in Raji (A), HEK293T (B), HL60 (C) whole cell lysates.