

Datasheet for ABIN7295238
anti-CDKN2A antibody (Center)[Go to Product page](#)

3 Images

Overview

Quantity:	100 µL
Target:	CDKN2A
Binding Specificity:	Center
Reactivity:	Human
Host:	Rabbit
Clonality:	Polyclonal
Conjugate:	This CDKN2A antibody is un-conjugated
Application:	Western Blotting (WB), Immunohistochemistry (IHC), Immunofluorescence (IF), Immunochromatography (IC)

Product Details

Immunogen:	KLH-conjugated synthetic peptide encompassing a sequence within the center region of human p14 ARF.
Specificity:	Recognizes endogenous levels of p14 ARF protein.
Characteristics:	Rabbit polyclonal antibody to p14 ARF
Purification:	The antibody was purified by immunogen affinity chromatography.

Target Details

Target:	CDKN2A
Alternative Name:	p14 ARF (CDKN2A Products)

Target Details

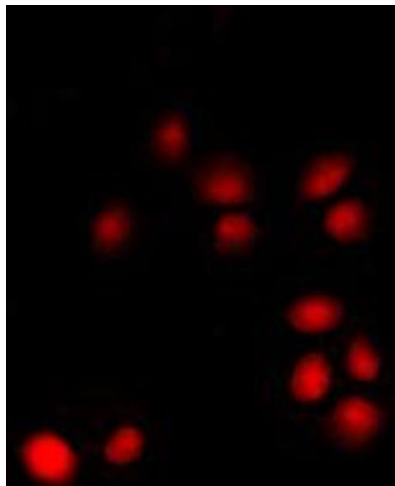
Background:	CDKN2, MLM, Cyclin-dependent kinase inhibitor 2A, isoform 4, p14ARF, p19ARF
Gene ID:	1029
UniProt:	Q8N726
Pathways:	Mitotic G1-G1/S Phases , Stem Cell Maintenance , Positive Regulation of Endopeptidase Activity , Autophagy , Positive Regulation of Response to DNA Damage Stimulus

Application Details

Application Notes:	WB (1:500 - 1:1000), IH (1:100 - 1:200), IF/IC (1:100 - 1:500)
Restrictions:	For Research Use only

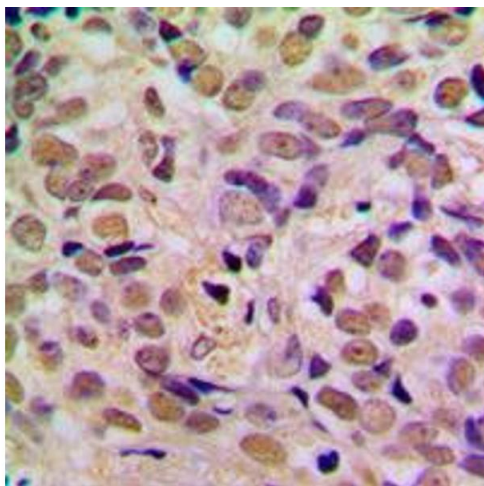
Handling

Format:	Liquid
Buffer:	Liquid in 0.42 % Potassium phosphate, 0.87 % Sodium chloride, pH 7.3, 30 % glycerol, and 0.01 % sodium azide.
Preservative:	Sodium azide
Precaution of Use:	This product contains Sodium azide: a POISONOUS AND HAZARDOUS SUBSTANCE which should be handled by trained staff only.
Storage:	-20 °C
Storage Comment:	Shipped at 4°C. Upon delivery aliquot and store at -20°C for one year. Avoid freeze/thaw cycles.
Expiry Date:	12 months



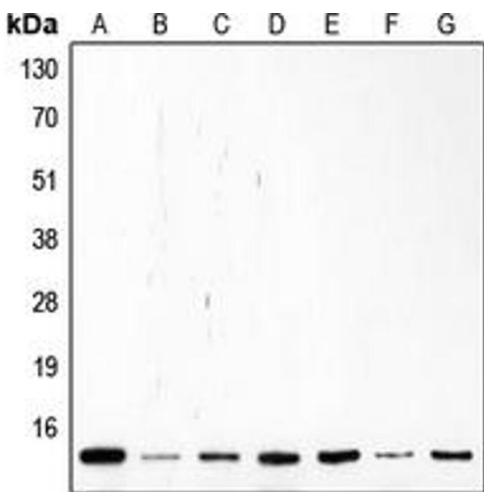
Immunofluorescence

Image 1. Immunofluorescent analysis of p14 ARF staining in K562 cells. Formalin-fixed cells were permeabilized with 0.1% Triton X-100 in TBS for 5-10 minutes and blocked with 3% BSA-PBS for 30 minutes at room temperature. Cells were probed with the primary antibody in 3% BSA-PBS and incubated overnight at 4 °C in a humidified chamber. Cells were washed with PBST and incubated with a DyLight 594-conjugated secondary antibody (red) in PBS at room temperature in the dark. DAPI was used to stain the cell nuclei (blue).



Immunohistochemistry

Image 2. Immunohistochemical analysis of p14 ARF staining in human breast cancer formalin fixed paraffin embedded tissue section. The section was pre-treated using heat mediated antigen retrieval with sodium citrate buffer (pH 6.0). The section was then incubated with the antibody at room temperature and detected using an HRP conjugated compact polymer system. DAB was used as the chromogen. The section was then counterstained with haematoxylin and mounted with DPX.



Western Blotting

Image 3. Western blot analysis of p14 ARF expression in Saos2 (A), Molt (B), K562 (C), Jurkat (D), HL60 (E), MCF7 (F), HeLa (G) whole cell lysates.