

Datasheet for ABIN7295250
anti-CEBPB antibody (C-Term)



[Go to Product page](#)

2 Images

Overview

Quantity:	100 µL
Target:	CEBPB
Binding Specificity:	C-Term
Reactivity:	Human, Cow, Dog
Host:	Rabbit
Clonality:	Polyclonal
Conjugate:	This CEBPB antibody is un-conjugated
Application:	Western Blotting (WB), Immunohistochemistry (IHC)

Product Details

Immunogen:	KLH-conjugated synthetic peptide encompassing a sequence within the C-term region of human C/EBP beta.
Specificity:	Recognizes endogenous levels of C/EBP beta protein.
Characteristics:	Rabbit polyclonal antibody to C/EBP beta
Purification:	The antibody was purified by immunogen affinity chromatography.

Target Details

Target:	CEBPB
Alternative Name:	C/EBP beta (CEBPB Products)
Background:	TCF5, CCAAT/enhancer-binding protein beta, C/EBP beta, Liver activator protein, LAP, Liver-

Target Details

	enriched inhibitory protein, LIP, Nuclear factor NF-IL6, Transcription factor 5, TCF-5
Gene ID:	1051
UniProt:	P17676
Pathways:	Interferon-gamma Pathway, Autophagy, Brown Fat Cell Differentiation

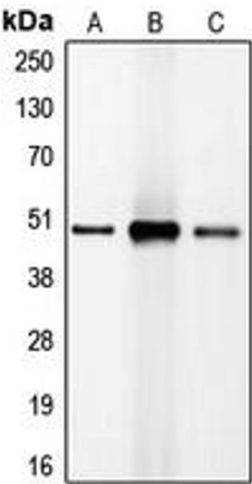
Application Details

Application Notes:	WB (1:500 - 1:1000), IH (1:100 - 1:200)
Restrictions:	For Research Use only

Handling

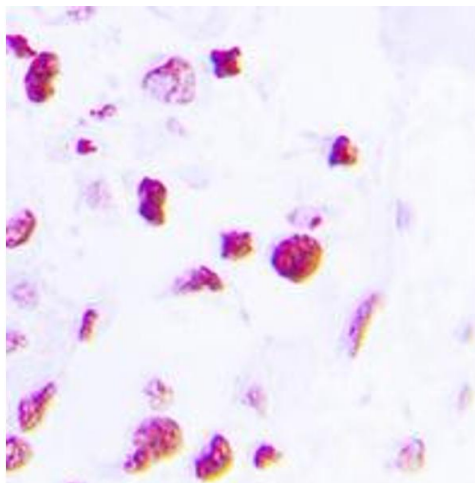
Format:	Liquid
Buffer:	Liquid in 0.42 % Potassium phosphate, 0.87 % Sodium chloride, pH 7.3, 30 % glycerol, and 0.01 % sodium azide.
Preservative:	Sodium azide
Precaution of Use:	This product contains Sodium azide: a POISONOUS AND HAZARDOUS SUBSTANCE which should be handled by trained staff only.
Storage:	-20 °C
Storage Comment:	Shipped at 4°C. Upon delivery aliquot and store at -20°C for one year. Avoid freeze/thaw cycles.
Expiry Date:	12 months

Images



Western Blotting

Image 1. Western blot analysis of C/EBP beta expression in HeLa (A), NIH3T3 (B), Jurkat (C) whole cell lysates.



Immunohistochemistry

Image 2. Immunohistochemical analysis of C/EBP beta staining in human lung cancer formalin fixed paraffin embedded tissue section. The section was pre-treated using heat mediated antigen retrieval with sodium citrate buffer (pH 6.0). The section was then incubated with the antibody at room temperature and detected using an HRP conjugated compact polymer system. DAB was used as the chromogen. The section was then counterstained with haematoxylin and mounted with DPX.