

Datasheet for ABIN7295276
anti-CHML antibody (Center)

2 Images

[Go to Product page](#)

Overview

Quantity:	100 µL
Target:	CHML
Binding Specificity:	Center
Reactivity:	Human, Mouse, Rat
Host:	Rabbit
Clonality:	Polyclonal
Conjugate:	This CHML antibody is un-conjugated
Application:	Western Blotting (WB), Immunohistochemistry (IHC)

Product Details

Immunogen:	KLH-conjugated synthetic peptide encompassing a sequence within the center region of human CHML.
Specificity:	Recognizes endogenous levels of CHML protein.
Characteristics:	Rabbit polyclonal antibody to CHML
Purification:	The antibody was purified by immunogen affinity chromatography.

Target Details

Target:	CHML
Alternative Name:	CHML (CHML Products)
Background:	REP2, Rab proteins geranylgeranyltransferase component A 2, Choroideremia-like protein, Rab

Target Details

	escort protein 2, REP-2
Gene ID:	1122, 12663
UniProt:	P26374 , Q9QZD5

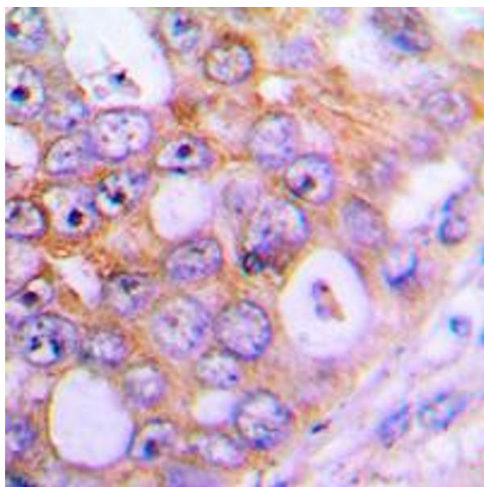
Application Details

Application Notes:	WB (1:500 - 1:1000), IH (1:100 - 1:200)
Restrictions:	For Research Use only

Handling

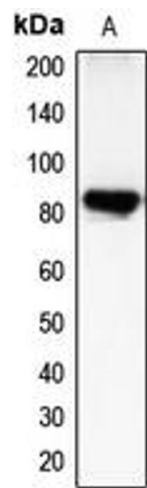
Format:	Liquid
Buffer:	Liquid in 0.42 % Potassium phosphate, 0.87 % Sodium chloride, pH 7.3, 30 % glycerol, and 0.01 % sodium azide.
Preservative:	Sodium azide
Precaution of Use:	This product contains Sodium azide: a POISONOUS AND HAZARDOUS SUBSTANCE which should be handled by trained staff only.
Storage:	-20 °C
Storage Comment:	Shipped at 4°C. Upon delivery aliquot and store at -20°C for one year. Avoid freeze/thaw cycles.
Expiry Date:	12 months

Images



Immunohistochemistry

Image 1. Immunohistochemical analysis of CHML staining in human lung cancer formalin fixed paraffin embedded tissue section. The section was pre-treated using heat mediated antigen retrieval with sodium citrate buffer (pH 6.0). The section was then incubated with the antibody at room temperature and detected using an HRP conjugated compact polymer system. DAB was used as the chromogen. The section was then counterstained with haematoxylin and mounted with DPX.



Western Blotting

Image 2. Western blot analysis of CHML expression in COLO205 (A) whole cell lysates.