



[Go to Product page](#)

Datasheet for ABIN7295290  
**anti-GPSM3 antibody (Center)**

1 Image

Overview

Quantity:	100 µL
Target:	GPSM3
Binding Specificity:	Center
Reactivity:	Human, Mouse, Rat, Pig
Host:	Rabbit
Clonality:	Polyclonal
Conjugate:	This GPSM3 antibody is un-conjugated
Application:	Western Blotting (WB)

Product Details

Immunogen:	KLH-conjugated synthetic peptide encompassing a sequence within the center region of human G18.
Specificity:	Recognizes endogenous levels of G18 protein.
Characteristics:	Rabbit polyclonal antibody to G18
Purification:	The antibody was purified by immunogen affinity chromatography.

Target Details

Target:	GPSM3
Alternative Name:	G18 ( <a href="#">GPSM3 Products</a> )
Background:	G18, Cytokine-inducible SH2-containing protein, CIS, CIS-1, Protein G18, Suppressor of cytokine

## Target Details

signaling, SOCS

Gene ID: 1154, 12700

UniProt: [Q9NSE2](#), [Q62225](#), [O70512](#)

## Application Details

Application Notes: WB (1:500 - 1:1000)

Restrictions: For Research Use only

## Handling

Format: Liquid

Buffer: Liquid in 0.42 % Potassium phosphate, 0.87 % Sodium chloride, pH 7.3, 30 % glycerol, and 0.01 % sodium azide.

Preservative: Sodium azide

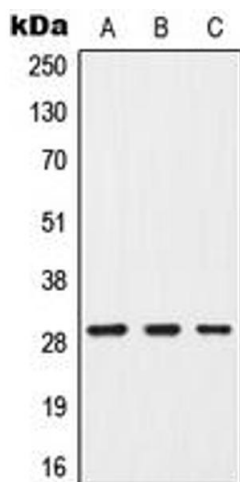
Precaution of Use: This product contains Sodium azide: a POISONOUS AND HAZARDOUS SUBSTANCE which should be handled by trained staff only.

Storage: -20 °C

Storage Comment: Shipped at 4°C. Upon delivery aliquot and store at -20°C for one year. Avoid freeze/thaw cycles.

Expiry Date: 12 months

## Images



### Western Blotting

**Image 1.** Western blot analysis of G18 expression in MCF7 (A), mouse brain (B), PC12 (C) whole cell lysates.