

Datasheet for ABIN7295298  
**anti-CLCN6 antibody (Center)**[Go to Product page](#)

## 1 Image

## Overview

Quantity:	100 µL
Target:	CLCN6
Binding Specificity:	Center
Reactivity:	Human, Rabbit
Host:	Rabbit
Clonality:	Polyclonal
Conjugate:	This CLCN6 antibody is un-conjugated
Application:	Western Blotting (WB)

## Product Details

Immunogen:	KLH-conjugated synthetic peptide encompassing a sequence within the center region of human CLCN6.
Specificity:	Recognizes endogenous levels of CLCN6 protein.
Characteristics:	Rabbit polyclonal antibody to CLCN6
Purification:	The antibody was purified by immunogen affinity chromatography.

## Target Details

Target:	CLCN6
Alternative Name:	CLCN6 ( <a href="#">CLCN6 Products</a> )
Background:	KIAA0046, Chloride transport protein 6, Chloride channel protein 6, CIC-6

## Target Details

Gene ID: 1185

UniProt: [P51797](#)

## Application Details

Application Notes: WB (1:500 - 1:1000)

Restrictions: For Research Use only

## Handling

Format: Liquid

Buffer: Liquid in 0.42 % Potassium phosphate, 0.87 % Sodium chloride, pH 7.3, 30 % glycerol, and 0.01 % sodium azide.

Preservative: Sodium azide

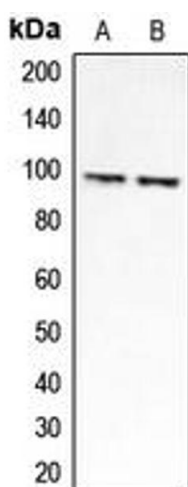
Precaution of Use: This product contains Sodium azide: a POISONOUS AND HAZARDOUS SUBSTANCE which should be handled by trained staff only.

Storage: -20 °C

Storage Comment: Shipped at 4°C. Upon delivery aliquot and store at -20°C for one year. Avoid freeze/thaw cycles.

Expiry Date: 12 months

## Images



### Western Blotting

**Image 1.** Western blot analysis of CLCN6 expression in HEK293A (A), Jurkat (B) whole cell lysates.