



[Go to Product page](#)

Datasheet for ABIN7295300

## anti-CLCN7 antibody (N-Term)

### 2 Images

#### Overview

Quantity:	100 µL
Target:	CLCN7
Binding Specificity:	N-Term
Reactivity:	Human, Rat, Mouse
Host:	Rabbit
Clonality:	Polyclonal
Conjugate:	This CLCN7 antibody is un-conjugated
Application:	Western Blotting (WB), Immunofluorescence (IF), Immunochromatography (IC)

#### Product Details

Immunogen:	KLH-conjugated synthetic peptide encompassing a sequence within the N-term region of human CLCN7.
Specificity:	Recognizes endogenous levels of CLCN7 protein.
Characteristics:	Rabbit polyclonal antibody to CLCN7
Purification:	The antibody was purified by immunogen affinity chromatography.

#### Target Details

Target:	CLCN7
Alternative Name:	CLCN7 ( <a href="#">CLCN7 Products</a> )
Background:	H(+)/Cl(-) exchange transporter 7, Chloride channel 7 alpha subunit, Chloride channel protein 7,

## Target Details

CIC-7

Gene ID: 1186, 26373, 29233

UniProt: [P51798](#), [O70496](#), [P51799](#)

## Application Details

Application Notes: WB (1:500 - 1:1000), IF/IC (1:100 - 1:500)

Restrictions: For Research Use only

## Handling

Format: Liquid

Buffer: Liquid in 0.42 % Potassium phosphate, 0.87 % Sodium chloride, pH 7.3, 30 % glycerol, and 0.01 % sodium azide.

Preservative: Sodium azide

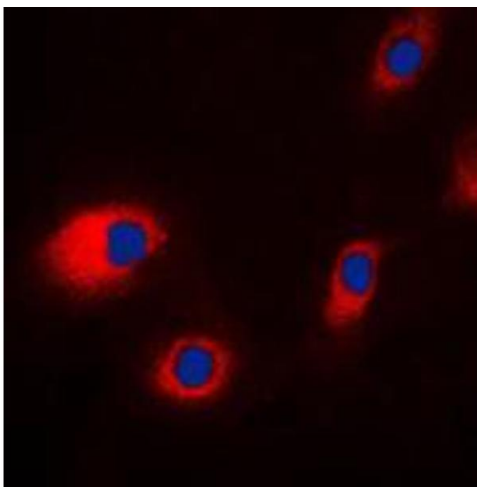
Precaution of Use: This product contains Sodium azide: a POISONOUS AND HAZARDOUS SUBSTANCE which should be handled by trained staff only.

Storage: -20 °C

Storage Comment: Shipped at 4°C. Upon delivery aliquot and store at -20°C for one year. Avoid freeze/thaw cycles.

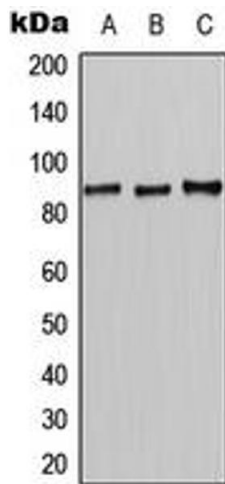
Expiry Date: 12 months

## Images



### Immunofluorescence

**Image 1.** Immunofluorescent analysis of CLCN7 staining in HeLa cells. Formalin-fixed cells were permeabilized with 0.1% Triton X-100 in TBS for 5-10 minutes and blocked with 3% BSA-PBS for 30 minutes at room temperature. Cells were probed with the primary antibody in 3% BSA-PBS and incubated overnight at 4 °C in a humidified chamber. Cells were washed with PBST and incubated with a DyLight 594-conjugated secondary antibody (red) in PBS at room temperature in the dark. DAPI was used to stain the cell



nuclei (blue).

### Western Blotting

**Image 2.** Western blot analysis of CLCN7 expression in HeLa (A), mouse liver (B), rat liver (C) whole cell lysates.