

Datasheet for ABIN7295306
anti-CLNS1A antibody (C-Term)



[Go to Product page](#)

1 Image

Overview

Quantity:	100 µL
Target:	CLNS1A
Binding Specificity:	C-Term
Reactivity:	Human, Dog, Rabbit
Host:	Rabbit
Clonality:	Polyclonal
Conjugate:	This CLNS1A antibody is un-conjugated
Application:	Western Blotting (WB), Immunoprecipitation (IP)

Product Details

Immunogen:	KLH-conjugated synthetic peptide encompassing a sequence within the C-term region of human CLNS1A.
Specificity:	Recognizes endogenous levels of CLNS1A protein.
Characteristics:	Rabbit polyclonal antibody to CLNS1A
Purification:	The antibody was purified by immunogen affinity chromatography.

Target Details

Target:	CLNS1A
Alternative Name:	CLNS1A (CLNS1A Products)
Background:	CLCI, ICLN, Methylosome subunit pICln, Chloride channel, nucleotide sensitive 1A, Chloride

Target Details

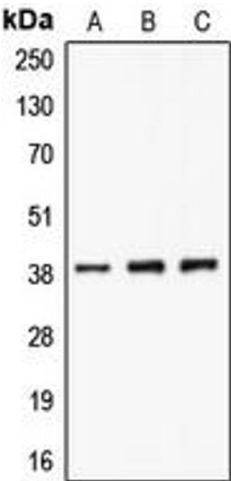
	conductance regulatory protein ICl _n , I(Cl _n), Chloride ion current inducer protein, ClCl, Reticulocyte pICl _n
Gene ID:	1207
UniProt:	P54105
Pathways:	Ribonucleoprotein Complex Subunit Organization

Application Details

Application Notes:	WB (1:500 - 1:1000), IP (1:10 - 1:100)
Restrictions:	For Research Use only

Handling

Format:	Liquid
Buffer:	Liquid in 0.42 % Potassium phosphate, 0.87 % Sodium chloride, pH 7.3, 30 % glycerol, and 0.01 % sodium azide.
Preservative:	Sodium azide
Precaution of Use:	This product contains Sodium azide: a POISONOUS AND HAZARDOUS SUBSTANCE which should be handled by trained staff only.
Storage:	-20 °C
Storage Comment:	Shipped at 4°C. Upon delivery aliquot and store at -20°C for one year. Avoid freeze/thaw cycles.
Expiry Date:	12 months



Western Blotting

Image 1. Western blot analysis of CLNS1A expression in A549 (A), K562 (B), Jurkat (C) whole cell lysates.