

Datasheet for ABIN7295308  
**anti-CMKLR1 antibody (Center)**[Go to Product page](#)

## 2 Images

## Overview

Quantity:	100 µL
Target:	CMKLR1
Binding Specificity:	Center
Reactivity:	Human, Mouse, Rat, Pig
Host:	Rabbit
Clonality:	Polyclonal
Conjugate:	This CMKLR1 antibody is un-conjugated
Application:	Western Blotting (WB), Immunohistochemistry (IHC), Immunoprecipitation (IP)

## Product Details

Immunogen:	KLH-conjugated synthetic peptide encompassing a sequence within the center region of human CMKLR1.
Specificity:	Recognizes endogenous levels of CMKLR1 protein.
Characteristics:	Rabbit polyclonal antibody to CMKLR1
Purification:	The antibody was purified by immunogen affinity chromatography.

## Target Details

Target:	CMKLR1
Alternative Name:	CMKLR1 ( <a href="#">CMKLR1 Products</a> )
Background:	CHEMR23, DEZ, Chemokine-like receptor 1, G-protein coupled receptor ChemR23, G-protein

## Target Details

	coupled receptor DEZ
Gene ID:	1240, 14747
UniProt:	<a href="#">Q99788</a> , <a href="#">P97468</a> , <a href="#">O35786</a>

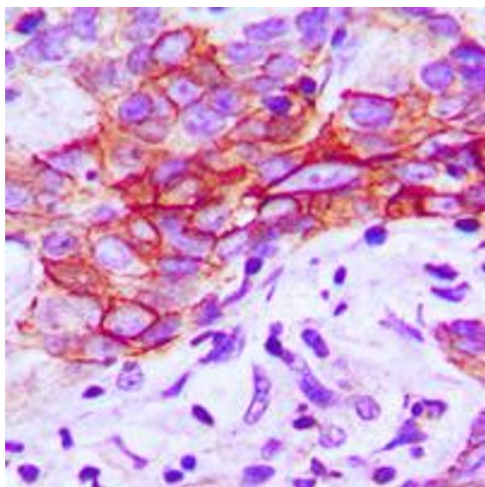
## Application Details

Application Notes:	WB (1:500 - 1:1000), IH (1:100 - 1:200), IP (1:10 - 1:100)
Restrictions:	For Research Use only

## Handling

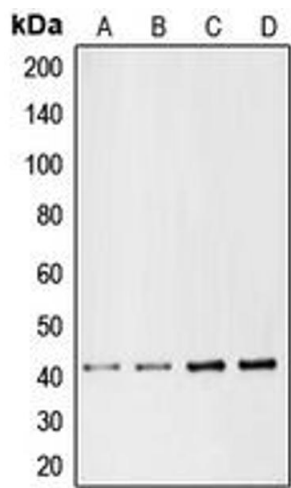
Format:	Liquid
Buffer:	Liquid in 0.42 % Potassium phosphate, 0.87 % Sodium chloride, pH 7.3, 30 % glycerol, and 0.01 % sodium azide.
Preservative:	Sodium azide
Precaution of Use:	This product contains Sodium azide: a POISONOUS AND HAZARDOUS SUBSTANCE which should be handled by trained staff only.
Storage:	-20 °C
Storage Comment:	Shipped at 4°C. Upon delivery aliquot and store at -20°C for one year. Avoid freeze/thaw cycles.
Expiry Date:	12 months

## Images



### Immunohistochemistry

**Image 1.** Immunohistochemical analysis of CMKLR1 staining in human breast cancer formalin fixed paraffin embedded tissue section. The section was pre-treated using heat mediated antigen retrieval with sodium citrate buffer (pH 6.0). The section was then incubated with the antibody at room temperature and detected using an HRP conjugated compact polymer system. DAB was used as the chromogen. The section was then counterstained with haematoxylin and mounted with DPX.



Western Blotting

**Image 2.** Western blot analysis of CMKLR1 expression in Jurkat (A), HepG2 (B), mouse liver (C), rat liver (D) whole cell lysates.