

Datasheet for ABIN7295318
anti-COL1A2 antibody (Center)

3 Images

[Go to Product page](#)

Overview

Quantity:	100 µL
Target:	COL1A2
Binding Specificity:	Center
Reactivity:	Human, Dog, Rabbit
Host:	Rabbit
Clonality:	Polyclonal
Conjugate:	This COL1A2 antibody is un-conjugated
Application:	Western Blotting (WB), Immunohistochemistry (IHC), Immunofluorescence (IF), Immunoprecipitation (IP), Immunochromatography (IC)

Product Details

Immunogen:	KLH-conjugated synthetic peptide encompassing a sequence within the center region of human Collagen 1 alpha 2.
Specificity:	Recognizes endogenous levels of Collagen 1 alpha 2 protein.
Characteristics:	Rabbit polyclonal antibody to Collagen 1 alpha 2
Purification:	The antibody was purified by immunogen affinity chromatography.

Target Details

Target:	COL1A2
Alternative Name:	Collagen 1 alpha 2 (COL1A2 Products)

Target Details

Background: Collagen alpha-2(I) chain, Alpha-2 type I collagen

Gene ID: 1278

UniProt: [P08123](#)

Application Details

Application Notes: WB (1:500 - 1:1000), IH (1:100 - 1:200), IF/IC (1:100 - 1:500), IP (1:10 - 1:100)

Restrictions: For Research Use only

Handling

Format: Liquid

Buffer: Liquid in 0.42 % Potassium phosphate, 0.87 % Sodium chloride, pH 7.3, 30 % glycerol, and 0.01 % sodium azide.

Preservative: Sodium azide

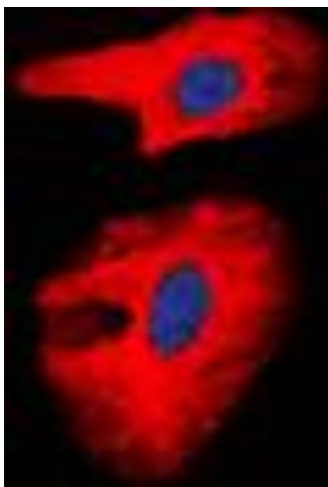
Precaution of Use: This product contains Sodium azide: a POISONOUS AND HAZARDOUS SUBSTANCE which should be handled by trained staff only.

Storage: -20 °C

Storage Comment: Shipped at 4°C. Upon delivery aliquot and store at -20°C for one year. Avoid freeze/thaw cycles.

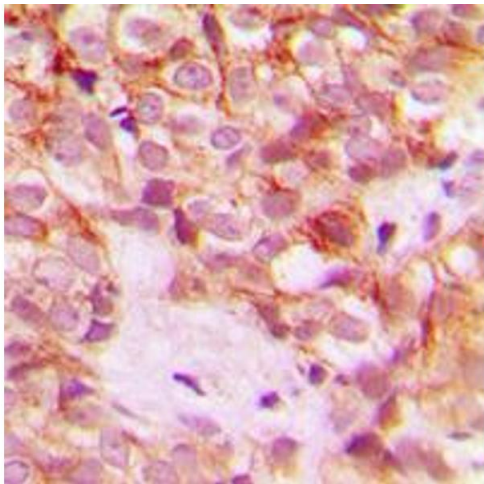
Expiry Date: 12 months

Images



Immunofluorescence

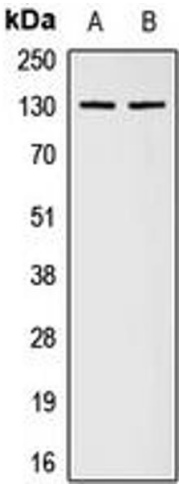
Image 1. Immunofluorescent analysis of Collagen 1 alpha 2 staining in A431 cells. Formalin-fixed cells were permeabilized with 0.1% Triton X-100 in TBS for 5-10 minutes and blocked with 3% BSA-PBS for 30 minutes at room temperature. Cells were probed with the primary antibody in 3% BSA-PBS and incubated overnight at 4 °C in a humidified chamber. Cells were washed with PBST and incubated with a DyLight 594-conjugated secondary antibody (red) in PBS at room temperature in the dark. DAPI



was used to stain the cell nuclei (blue).

Immunohistochemistry

Image 2. Immunohistochemical analysis of Collagen 1 alpha 2 staining in human breast cancer formalin fixed paraffin embedded tissue section. The section was pre-treated using heat mediated antigen retrieval with sodium citrate buffer (pH 6.0). The section was then incubated with the antibody at room temperature and detected using an HRP conjugated compact polymer system. DAB was used as the chromogen. The section was then counterstained with haematoxylin and mounted with DPX.



Western Blotting

Image 3. Western blot analysis of Collagen 1 alpha 2 expression in A431 (A), HEK293T (B) whole cell lysates.