

Datasheet for ABIN7295332  
**anti-COL11A1 antibody (Center)**[Go to Product page](#)

## 3 Images

## Overview

Quantity:	100 µL
Target:	COL11A1
Binding Specificity:	Center
Reactivity:	Human, Mouse, Rat, Cow
Host:	Rabbit
Clonality:	Polyclonal
Conjugate:	This COL11A1 antibody is un-conjugated
Application:	Western Blotting (WB), Immunohistochemistry (IHC), Immunofluorescence (IF), Immunochromatography (IC)

## Product Details

Immunogen:	KLH-conjugated synthetic peptide encompassing a sequence within the center region of human Collagen 11 alpha 1.
Specificity:	Recognizes endogenous levels of Collagen 11 alpha 1 protein.
Characteristics:	Rabbit polyclonal antibody to Collagen 11 alpha 1
Purification:	The antibody was purified by immunogen affinity chromatography.

## Target Details

Target:	COL11A1
Alternative Name:	Collagen 11 alpha 1 ( <a href="#">COL11A1 Products</a> )

## Target Details

Background:	COLL6, Collagen alpha-1(XI) chain
Gene ID:	1301, 12814, 25654
UniProt:	<a href="#">P12107</a> , <a href="#">Q61245</a> , <a href="#">P20909</a>
Pathways:	<a href="#">Sensory Perception of Sound</a>

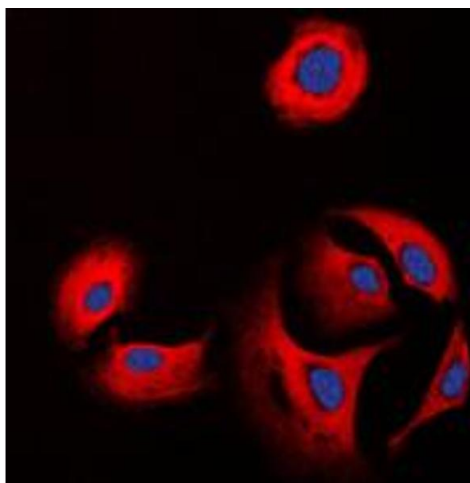
## Application Details

Application Notes:	WB (1:500 - 1:1000), IH (1:100 - 1:200), IF/IC (1:100 - 1:500)
Restrictions:	For Research Use only

## Handling

Format:	Liquid
Buffer:	Liquid in 0.42 % Potassium phosphate, 0.87 % Sodium chloride, pH 7.3, 30 % glycerol, and 0.01 % sodium azide.
Preservative:	Sodium azide
Precaution of Use:	This product contains Sodium azide: a POISONOUS AND HAZARDOUS SUBSTANCE which should be handled by trained staff only.
Storage:	-20 °C
Storage Comment:	Shipped at 4°C. Upon delivery aliquot and store at -20°C for one year. Avoid freeze/thaw cycles.
Expiry Date:	12 months

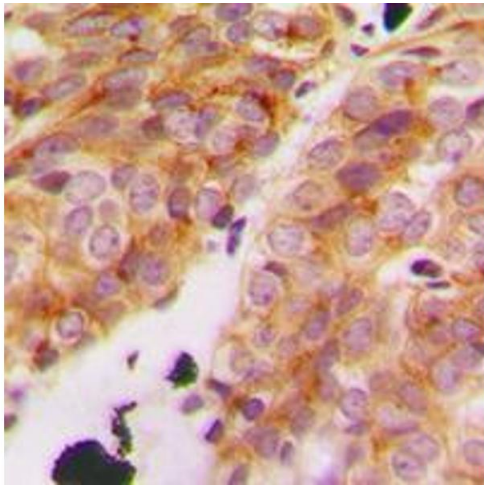
## Images



### Immunofluorescence

**Image 1.** Immunofluorescent analysis of Collagen 11 alpha 1 staining in K562 cells. Formalin-fixed cells were permeabilized with 0.1% Triton X-100 in TBS for 5-10 minutes and blocked with 3% BSA-PBS for 30 minutes at room temperature. Cells were probed with the primary antibody in 3% BSA-PBS and incubated overnight at 4 °C in a humidified chamber. Cells were washed with PBST and incubated with a DyLight 594-conjugated secondary

antibody (red) in PBS at room temperature in the dark. DAPI was used to stain the cell nuclei (blue).



Immunohistochemistry

**Image 2.** Immunohistochemical analysis of Collagen 11 alpha 1 staining in human breast cancer formalin fixed paraffin embedded tissue section. The section was pre-treated using heat mediated antigen retrieval with sodium citrate buffer (pH 6.0). The section was then incubated with the antibody at room temperature and detected using an HRP conjugated compact polymer system. DAB was used as the chromogen. The section was then counterstained with haematoxylin and mounted with DPX.

Western Blotting

**Image 3.** Western blot analysis of Collagen 11 alpha 1 expression in K562 (A), Saos2 (B) whole cell lysates.

