



[Go to Product page](#)

Datasheet for ABIN7295364
anti-CRHR2 antibody (Center)

2 Images

Overview

Quantity:	100 µL
Target:	CRHR2
Binding Specificity:	Center
Reactivity:	Human, Mouse, Rat, Pig
Host:	Rabbit
Clonality:	Polyclonal
Conjugate:	This CRHR2 antibody is un-conjugated
Application:	Western Blotting (WB), Immunohistochemistry (IHC), Immunoprecipitation (IP)

Product Details

Immunogen:	KLH-conjugated synthetic peptide encompassing a sequence within the center region of human CRHR2.
Specificity:	Recognizes endogenous levels of CRHR2 protein.
Characteristics:	Rabbit polyclonal antibody to CRHR2
Purification:	The antibody was purified by immunogen affinity chromatography.

Target Details

Target:	CRHR2
Alternative Name:	CRHR2 (CRHR2 Products)
Background:	CRF2R, CRH2R, Corticotropin-releasing factor receptor 2, CRF-R-2, CRF-R2, CRFR-2,

Target Details

Corticotropin-releasing hormone receptor 2, CRH-R-2, CRH-R2

Gene ID: 1395, 12922, 64680

UniProt: [Q13324](#), [Q60748](#), [P47866](#)

Pathways: [Negative Regulation of Hormone Secretion](#), [cAMP Metabolic Process](#), [Feeding Behaviour](#)

Application Details

Application Notes: WB (1:500 - 1:1000), IHC (1:100 - 1:200), IP (1:10 - 1:100)

Restrictions: For Research Use only

Handling

Format: Liquid

Buffer: Liquid in 0.42 % Potassium phosphate, 0.87 % Sodium chloride, pH 7.3, 30 % glycerol, and 0.01 % sodium azide.

Preservative: Sodium azide

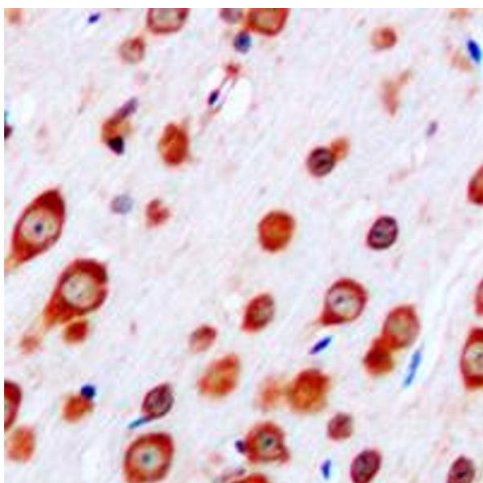
Precaution of Use: This product contains Sodium azide: a POISONOUS AND HAZARDOUS SUBSTANCE which should be handled by trained staff only.

Storage: -20 °C

Storage Comment: Shipped at 4°C. Upon delivery aliquot and store at -20°C for one year. Avoid freeze/thaw cycles.

Expiry Date: 12 months

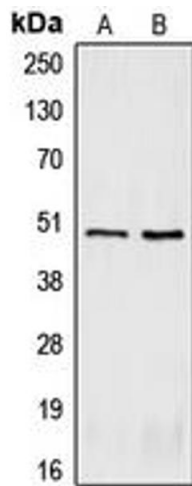
Images



Immunohistochemistry

Image 1. Immunohistochemical analysis of CRHR2 staining in human brain formalin fixed paraffin embedded tissue section. The section was pre-treated using heat mediated antigen retrieval with sodium citrate buffer (pH 6.0). The section was then incubated with the antibody at room temperature and detected using an HRP conjugated compact polymer system. DAB was used as the chromogen. The section was then counterstained with

haematoxylin and mounted with DPX.



Western Blotting

Image 2. Western blot analysis of CRHR2 expression in BC3H1 (A), U87MG (B) whole cell lysates.