

Datasheet for ABIN7295382

anti-Casein Kinase 1 gamma 2 antibody (N-Term)**2** Images[Go to Product page](#)

Overview

Quantity:	100 µL
Target:	Casein Kinase 1 gamma 2 (CSNK1G2)
Binding Specificity:	N-Term
Reactivity:	Human, Mouse, Rat, Cow
Host:	Rabbit
Clonality:	Polyclonal
Conjugate:	This Casein Kinase 1 gamma 2 antibody is un-conjugated
Application:	Western Blotting (WB), Immunofluorescence (IF), Immunochromatography (IC)

Product Details

Immunogen:	KLH-conjugated synthetic peptide encompassing a sequence within the N-term region of human CK1 gamma 2.
Specificity:	Recognizes endogenous levels of CK1 gamma 2 protein.
Characteristics:	Rabbit polyclonal antibody to CK1 gamma 2
Purification:	The antibody was purified by immunogen affinity chromatography.

Target Details

Target:	Casein Kinase 1 gamma 2 (CSNK1G2)
Alternative Name:	CK1 gamma 2 (CSNK1G2 Products)
Background:	CK1G2, Casein kinase I isoform gamma-2, CKI-gamma 2

Target Details

Gene ID: 1455, 103236, 65278

UniProt: [P78368](#), [Q8BVP5](#), [Q62762](#)

Pathways: [Hedgehog Signaling](#)

Application Details

Application Notes: WB (1:500 - 1:1000), IF/IC (1:100 - 1:500)

Restrictions: For Research Use only

Handling

Format: Liquid

Buffer: Liquid in 0.42 % Potassium phosphate, 0.87 % Sodium chloride, pH 7.3, 30 % glycerol, and 0.01 % sodium azide.

Preservative: Sodium azide

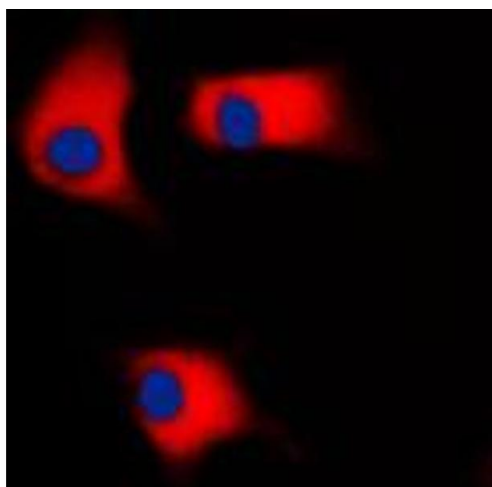
Precaution of Use: This product contains Sodium azide: a POISONOUS AND HAZARDOUS SUBSTANCE which should be handled by trained staff only.

Storage: -20 °C

Storage Comment: Shipped at 4°C. Upon delivery aliquot and store at -20°C for one year. Avoid freeze/thaw cycles.

Expiry Date: 12 months

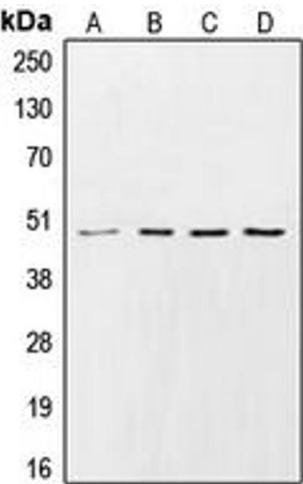
Images



Immunofluorescence

Image 1. Immunofluorescent analysis of CK1 gamma 2 staining in Raw264.7 cells. Formalin-fixed cells were permeabilized with 0.1% Triton X-100 in TBS for 5-10 minutes and blocked with 3% BSA-PBS for 30 minutes at room temperature. Cells were probed with the primary antibody in 3% BSA-PBS and incubated overnight at 4 °C in a humidified chamber. Cells were washed with PBST and incubated with a DyLight 594-conjugated secondary antibody (red) in PBS at room temperature in the dark. DAPI

was used to stain the cell nuclei (blue).



Western Blotting

Image 2. Western blot analysis of CK1 gamma 2 expression in HeLa (A), Raw264.7 (B), PC12 (C), rat heart (D) whole cell lysates.