

Datasheet for ABIN7295398

**anti-Cardiotrophin 1 antibody (N-Term)****2** Images[Go to Product page](#)

## Overview

Quantity:	100 µL
Target:	Cardiotrophin 1 (CTF1)
Binding Specificity:	N-Term
Reactivity:	Human, Rat, Mouse, Monkey
Host:	Rabbit
Clonality:	Polyclonal
Conjugate:	This Cardiotrophin 1 antibody is un-conjugated
Application:	Western Blotting (WB), Immunohistochemistry (IHC)

## Product Details

Immunogen:	KLH-conjugated synthetic peptide encompassing a sequence within the N-term region of human Cardiotrophin-1.
Specificity:	Recognizes endogenous levels of Cardiotrophin-1 protein.
Characteristics:	Rabbit polyclonal antibody to Cardiotrophin-1
Purification:	The antibody was purified by immunogen affinity chromatography.

## Target Details

Target:	Cardiotrophin 1 (CTF1)
Alternative Name:	Cardiotrophin-1 ( <a href="#">CTF1 Products</a> )
Background:	Cardiotrophin-1, CT-1

## Target Details

Gene ID:	1489, 13019, 29201
UniProt:	<a href="#">Q16619</a> , <a href="#">Q60753</a> , <a href="#">Q63086</a>
Pathways:	<a href="#">JAK-STAT Signaling</a>

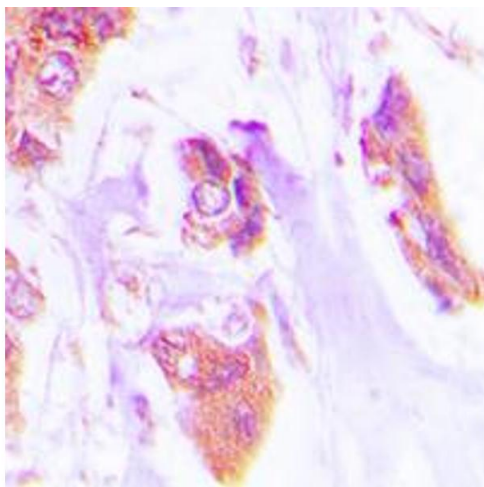
## Application Details

Application Notes:	WB (1:500 - 1:1000), IH (1:100 - 1:200)
Restrictions:	For Research Use only

## Handling

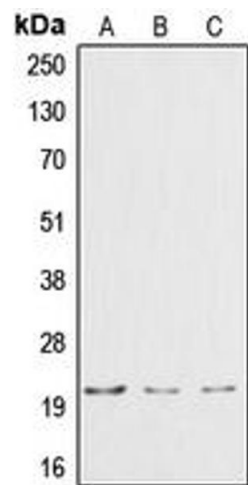
Format:	Liquid
Buffer:	Liquid in 0.42 % Potassium phosphate, 0.87 % Sodium chloride, pH 7.3, 30 % glycerol, and 0.01 % sodium azide.
Preservative:	Sodium azide
Precaution of Use:	This product contains Sodium azide: a POISONOUS AND HAZARDOUS SUBSTANCE which should be handled by trained staff only.
Storage:	-20 °C
Storage Comment:	Shipped at 4°C. Upon delivery aliquot and store at -20°C for one year. Avoid freeze/thaw cycles.
Expiry Date:	12 months

## Images



### Immunohistochemistry

**Image 1.** Immunohistochemical analysis of Cardiotrophin-1 staining in human lung cancer formalin fixed paraffin embedded tissue section. The section was pre-treated using heat mediated antigen retrieval with sodium citrate buffer (pH 6.0). The section was then incubated with the antibody at room temperature and detected using an HRP conjugated compact polymer system. DAB was used as the chromogen. The section was then counterstained with haematoxylin and mounted with DPX.



Western Blotting

**Image 2.** Western blot analysis of Cardiotrophin-1 expression in HepG2 (A), HeLa (B), Jurkat (C) whole cell lysates.