

Datasheet for ABIN7295406

anti-CTP Synthase antibody (N-Term)**2** Images[Go to Product page](#)

Overview

| | |
|----------------------|---|
| Quantity: | 100 µL |
| Target: | CTP Synthase (CTPS) |
| Binding Specificity: | N-Term |
| Reactivity: | Human, Mouse, Rat, Chicken |
| Host: | Rabbit |
| Clonality: | Polyclonal |
| Conjugate: | This CTP Synthase antibody is un-conjugated |
| Application: | Western Blotting (WB), Immunohistochemistry (IHC) |

Product Details

| | |
|------------------|--|
| Immunogen: | KLH-conjugated synthetic peptide encompassing a sequence within the N-term region of human CTPS. |
| Specificity: | Recognizes endogenous levels of CTPS protein. |
| Characteristics: | Rabbit polyclonal antibody to CTPS |
| Purification: | The antibody was purified by immunogen affinity chromatography. |

Target Details

| | |
|-------------------|---|
| Target: | CTP Synthase (CTPS) |
| Alternative Name: | CTPS (CTPS Products) |
| Background: | CTPS, CTP synthase 1, CTP synthetase 1, UTP--ammonia ligase 1 |

Target Details

| | |
|-----------|--|
| Gene ID: | 1503, 51797 |
| UniProt: | P17812 , P70698 |
| Pathways: | Proton Transport , Ribonucleoside Biosynthetic Process |

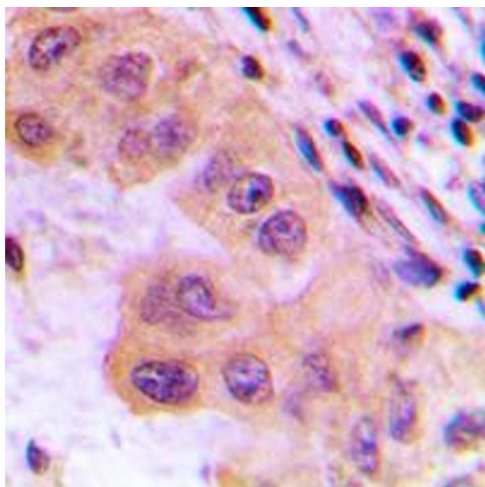
Application Details

| | |
|--------------------|---|
| Application Notes: | WB (1:500 - 1:1000), IH (1:100 - 1:200) |
| Restrictions: | For Research Use only |

Handling

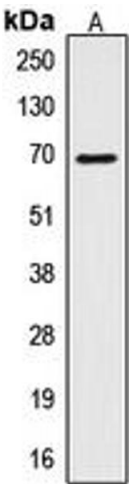
| | |
|--------------------|--|
| Format: | Liquid |
| Buffer: | Liquid in 0.42 % Potassium phosphate, 0.87 % Sodium chloride, pH 7.3, 30 % glycerol, and 0.01 % sodium azide. |
| Preservative: | Sodium azide |
| Precaution of Use: | This product contains Sodium azide: a POISONOUS AND HAZARDOUS SUBSTANCE which should be handled by trained staff only. |
| Storage: | -20 °C |
| Storage Comment: | Shipped at 4°C. Upon delivery aliquot and store at -20°C for one year. Avoid freeze/thaw cycles. |
| Expiry Date: | 12 months |

Images



Immunohistochemistry

Image 1. Immunohistochemical analysis of CTPS staining in human liver cancer formalin fixed paraffin embedded tissue section. The section was pre-treated using heat mediated antigen retrieval with sodium citrate buffer (pH 6.0). The section was then incubated with the antibody at room temperature and detected using an HRP conjugated compact polymer system. DAB was used as the chromogen. The section was then counterstained with haematoxylin and mounted with DPX.



Western Blotting

Image 2. Western blot analysis of CTPS expression in HepG2 (A) whole cell lysates.