

Datasheet for ABIN7295430
anti-CYP1A1/2 antibody (Center)

3 Images

[Go to Product page](#)

Overview

Quantity:	100 µL
Target:	CYP1A1/2
Binding Specificity:	Center
Reactivity:	Human, Rat, Mouse, Monkey, Dog, Sheep
Host:	Rabbit
Clonality:	Polyclonal
Conjugate:	This CYP1A1/2 antibody is un-conjugated
Application:	Western Blotting (WB), Immunofluorescence (IF), Immunohistochemistry (IHC), Immunoprecipitation (IP), Immunochromatography (IC)

Product Details

Immunogen:	KLH-conjugated synthetic peptide encompassing a sequence within the center region of human Cytochrome P450 1A1/2.
Specificity:	Recognizes endogenous levels of Cytochrome P450 1A1/2 protein.
Characteristics:	Rabbit polyclonal antibody to Cytochrome P450 1A1/2
Purification:	The antibody was purified by immunogen affinity chromatography.

Target Details

Target:	CYP1A1/2
Alternative Name:	Cytochrome P450 1A1/2 (CYP1A1/2 Products)

Target Details

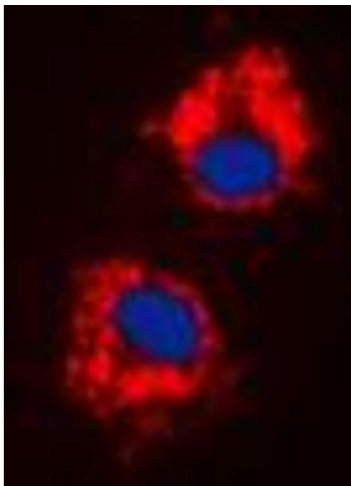
Background:	CYP1A1, Cytochrome P450 1A1, CYPIA1, Cytochrome P450 form 6, Cytochrome P450-C, Cytochrome P450-P1, CYP1A2, Cytochrome P450 1A2, CYPIA2, Cytochrome P(3)450, Cytochrome P450 4, Cytochrome P450-P3
Gene ID:	1543, 1544, 13076
UniProt:	P04798 , P05177 , P00184 , P00186 , P00185 , P04799

Application Details

Application Notes:	WB (1:500 - 1:1000), IH (1:100 - 1:200), IF/IC (1:100 - 1:500), IP (1:10 - 1:100)
Restrictions:	For Research Use only

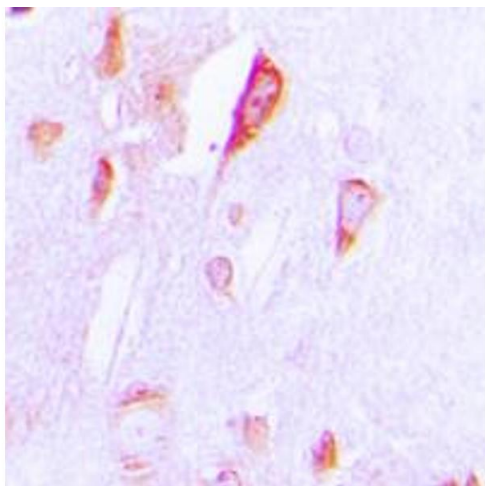
Handling

Format:	Liquid
Buffer:	Liquid in 0.42 % Potassium phosphate, 0.87 % Sodium chloride, pH 7.3, 30 % glycerol, and 0.01 % sodium azide.
Preservative:	Sodium azide
Precaution of Use:	This product contains Sodium azide: a POISONOUS AND HAZARDOUS SUBSTANCE which should be handled by trained staff only.
Storage:	-20 °C
Storage Comment:	Shipped at 4°C. Upon delivery aliquot and store at -20°C for one year. Avoid freeze/thaw cycles.
Expiry Date:	12 months



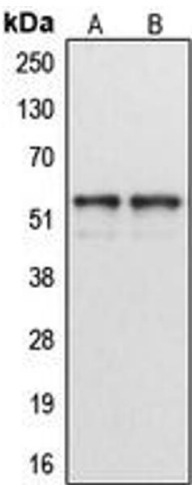
Immunofluorescence

Image 1. Immunofluorescent analysis of Cytochrome P450 1A1/2 staining in HeLa cells. Formalin-fixed cells were permeabilized with 0.1% Triton X-100 in TBS for 5-10 minutes and blocked with 3% BSA-PBS for 30 minutes at room temperature. Cells were probed with the primary antibody in 3% BSA-PBS and incubated overnight at 4 °C in a humidified chamber. Cells were washed with PBST and incubated with a DyLight 594-conjugated secondary antibody (red) in PBS at room temperature in the dark. DAPI was used to stain the cell nuclei (blue).



Immunohistochemistry

Image 2. Immunohistochemical analysis of Cytochrome P450 1A1/2 staining in human brain formalin fixed paraffin embedded tissue section. The section was pre-treated using heat mediated antigen retrieval with sodium citrate buffer (pH 6.0). The section was then incubated with the antibody at room temperature and detected using an HRP conjugated compact polymer system. DAB was used as the chromogen. The section was then counterstained with haematoxylin and mounted with DPX.



Western Blotting

Image 3. Western blot analysis of Cytochrome P450 1A1/2 expression in MCF7 (A), HeLa (B) whole cell lysates.