

Datasheet for ABIN7295438
anti-CYP2A13 antibody (Center)

3 Images

[Go to Product page](#)

Overview

Quantity:	100 µL
Target:	CYP2A13
Binding Specificity:	Center
Reactivity:	Human, Dog, Rabbit
Host:	Rabbit
Clonality:	Polyclonal
Conjugate:	This CYP2A13 antibody is un-conjugated
Application:	Western Blotting (WB), Immunofluorescence (IF), Immunohistochemistry (IHC), Immunoprecipitation (IP), Immunochromatography (IC)

Product Details

Immunogen:	KLH-conjugated synthetic peptide encompassing a sequence within the center region of human Cytochrome P450 2A13.
Specificity:	Recognizes endogenous levels of Cytochrome P450 2A13 protein.
Characteristics:	Rabbit polyclonal antibody to Cytochrome P450 2A13
Purification:	The antibody was purified by immunogen affinity chromatography.

Target Details

Target:	CYP2A13
Alternative Name:	Cytochrome P450 2A13 (CYP2A13 Products)

Target Details

Background:	Cytochrome P450 2A13, CYP1A13
Gene ID:	1553
UniProt:	Q16696

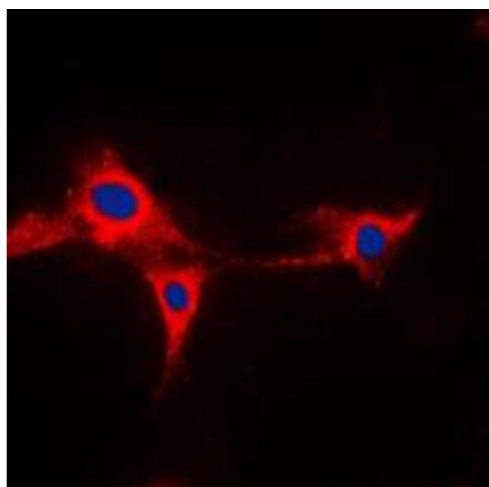
Application Details

Application Notes:	WB (1:500 - 1:1000), IH (1:100 - 1:200), IF/IC (1:100 - 1:500), IP (1:10 - 1:100)
Restrictions:	For Research Use only

Handling

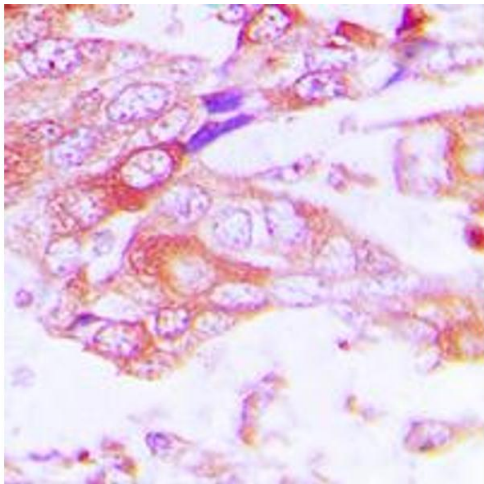
Format:	Liquid
Buffer:	Liquid in 0.42 % Potassium phosphate, 0.87 % Sodium chloride, pH 7.3, 30 % glycerol, and 0.01 % sodium azide.
Preservative:	Sodium azide
Precaution of Use:	This product contains Sodium azide: a POISONOUS AND HAZARDOUS SUBSTANCE which should be handled by trained staff only.
Storage:	-20 °C
Storage Comment:	Shipped at 4°C. Upon delivery aliquot and store at -20°C for one year. Avoid freeze/thaw cycles.
Expiry Date:	12 months

Images



Immunofluorescence

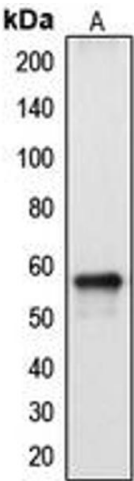
Image 1. Immunofluorescent analysis of Cytochrome P450 2A13 staining in HepG2 cells. Formalin-fixed cells were permeabilized with 0.1% Triton X-100 in TBS for 5-10 minutes and blocked with 3% BSA-PBS for 30 minutes at room temperature. Cells were probed with the primary antibody in 3% BSA-PBS and incubated overnight at 4 °C in a humidified chamber. Cells were washed with PBST and incubated with a DyLight 594-conjugated secondary antibody (red) in PBS at room temperature in the dark. DAPI



was used to stain the cell nuclei (blue).

Immunohistochemistry

Image 2. Immunohistochemical analysis of Cytochrome P450 2A13 staining in human lung cancer formalin fixed paraffin embedded tissue section. The section was pre-treated using heat mediated antigen retrieval with sodium citrate buffer (pH 6.0). The section was then incubated with the antibody at room temperature and detected using an HRP conjugated compact polymer system. DAB was used as the chromogen. The section was then counterstained with haematoxylin and mounted with DPX.



Western Blotting

Image 3. Western blot analysis of Cytochrome P450 2A13 expression in HepG2 (A) whole cell lysates.