

Datasheet for ABIN7295464
anti-CYP8B1 antibody (Center)



[Go to Product page](#)

1 Image

Overview

Quantity:	100 µL
Target:	CYP8B1
Binding Specificity:	Center
Reactivity:	Human, Mouse, Rat
Host:	Rabbit
Clonality:	Polyclonal
Conjugate:	This CYP8B1 antibody is un-conjugated
Application:	Western Blotting (WB)

Product Details

Immunogen:	KLH-conjugated synthetic peptide encompassing a sequence within the center region of human Cytochrome P450 8B1.
Specificity:	Recognizes endogenous levels of Cytochrome P450 8B1 protein.
Characteristics:	Rabbit polyclonal antibody to Cytochrome P450 8B1
Purification:	The antibody was purified by immunogen affinity chromatography.

Target Details

Target:	CYP8B1
Alternative Name:	Cytochrome P450 8B1 (CYP8B1 Products)
Background:	CYP12, 7-alpha-hydroxycholest-4-en-3-one 12-alpha-hydroxylase, 7-alpha-hydroxy-4-cholesten-

Target Details

	3-one 12-alpha-hydroxylase, CYPVIIB1, Cytochrome P450 8B1, Sterol 12-alpha-hydroxylase
Gene ID:	1582, 13124
UniProt:	Q9UNU6 , O88962

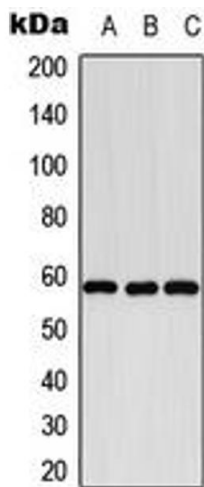
Application Details

Application Notes:	WB (1:500 - 1:1000)
Restrictions:	For Research Use only

Handling

Format:	Liquid
Buffer:	Liquid in 0.42 % Potassium phosphate, 0.87 % Sodium chloride, pH 7.3, 30 % glycerol, and 0.01 % sodium azide.
Preservative:	Sodium azide
Precaution of Use:	This product contains Sodium azide: a POISONOUS AND HAZARDOUS SUBSTANCE which should be handled by trained staff only.
Storage:	-20 °C
Storage Comment:	Shipped at 4°C. Upon delivery aliquot and store at -20°C for one year. Avoid freeze/thaw cycles.
Expiry Date:	12 months

Images



Western Blotting

Image 1. Western blot analysis of Cytochrome P450 8B1 expression in K562 (A), SP2/0 (B), PC12 (C) whole cell lysates.