

Datasheet for ABIN7295466
anti-CYP11A1 antibody (C-Term)



[Go to Product page](#)

2 Images

Overview

Quantity:	100 µL
Target:	CYP11A1
Binding Specificity:	C-Term
Reactivity:	Human, Rat, Mouse, Monkey
Host:	Rabbit
Clonality:	Polyclonal
Conjugate:	This CYP11A1 antibody is un-conjugated
Application:	Western Blotting (WB), Immunofluorescence (IF), Immunochromatography (IC)

Product Details

Immunogen:	KLH-conjugated synthetic peptide encompassing a sequence within the C-term region of human Cytochrome P450 11A1.
Specificity:	Recognizes endogenous levels of Cytochrome P450 11A1 protein.
Characteristics:	Rabbit polyclonal antibody to Cytochrome P450 11A1
Purification:	The antibody was purified by immunogen affinity chromatography.

Target Details

Target:	CYP11A1
Alternative Name:	Cytochrome P450 11A1 (CYP11A1 Products)
Background:	CYP11A, Cholesterol side-chain cleavage enzyme, mitochondrial, CYPXIA1, Cholesterol

Target Details

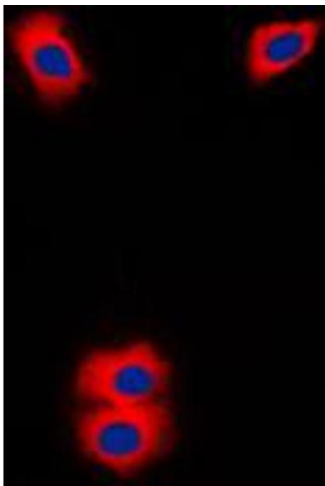
	desmolase, Cytochrome P450 11A1, Cytochrome P450(scc)
Gene ID:	1583, 13070, 29680
UniProt:	P05108 , Q9QZ82 , P14137
Pathways:	Metabolism of Steroid Hormones and Vitamin D , Steroid Hormone Biosynthesis , C21-Steroid Hormone Metabolic Process , Cellular Response to Molecule of Bacterial Origin

Application Details

Application Notes:	WB (1:500 - 1:1000), IF/IC (1:100 - 1:500)
Restrictions:	For Research Use only

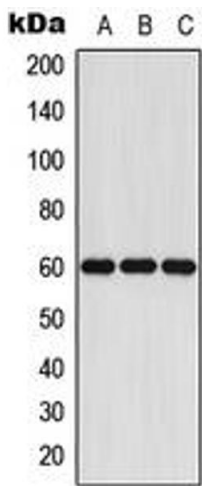
Handling

Format:	Liquid
Buffer:	Liquid in 0.42 % Potassium phosphate, 0.87 % Sodium chloride, pH 7.3, 30 % glycerol, and 0.01 % sodium azide.
Preservative:	Sodium azide
Precaution of Use:	This product contains Sodium azide: a POISONOUS AND HAZARDOUS SUBSTANCE which should be handled by trained staff only.
Storage:	-20 °C
Storage Comment:	Shipped at 4°C. Upon delivery aliquot and store at -20°C for one year. Avoid freeze/thaw cycles.
Expiry Date:	12 months



Immunofluorescence

Image 1. Immunofluorescent analysis of Cytochrome P450 11A1 staining in Jurkat cells. Formalin-fixed cells were permeabilized with 0.1% Triton X-100 in TBS for 5-10 minutes and blocked with 3% BSA-PBS for 30 minutes at room temperature. Cells were probed with the primary antibody in 3% BSA-PBS and incubated overnight at 4 °C in a humidified chamber. Cells were washed with PBST and incubated with a DyLight 594-conjugated secondary antibody (red) in PBS at room temperature in the dark. DAPI was used to stain the cell nuclei (blue).



Western Blotting

Image 2. Western blot analysis of Cytochrome P450 11A1 expression in Jurkat (A), mouse liver (B), rat liver (C) whole cell lysates.