

Datasheet for ABIN7295478  
**anti-DGKB antibody (C-Term)**



[Go to Product page](#)

1 Image

## Overview

Quantity:	100 µL
Target:	DGKB
Binding Specificity:	C-Term
Reactivity:	Human, Monkey
Host:	Rabbit
Clonality:	Polyclonal
Conjugate:	This DGKB antibody is un-conjugated
Application:	Western Blotting (WB)

## Product Details

Immunogen:	KLH-conjugated synthetic peptide encompassing a sequence within the C-term region of human DGK beta.
Specificity:	Recognizes endogenous levels of DGK beta protein.
Characteristics:	Rabbit polyclonal antibody to DGK beta
Purification:	The antibody was purified by immunogen affinity chromatography.

## Target Details

Target:	DGKB
Alternative Name:	DGK beta ( <a href="#">DGKB Products</a> )
Background:	DAGK2, KIAA0718, Diacylglycerol kinase beta, DAG kinase beta, 90 kDa diacylglycerol kinase,

### Target Details

	Diglyceride kinase beta, DGK-beta
Gene ID:	1607
UniProt:	<a href="#">Q9Y6T7</a>

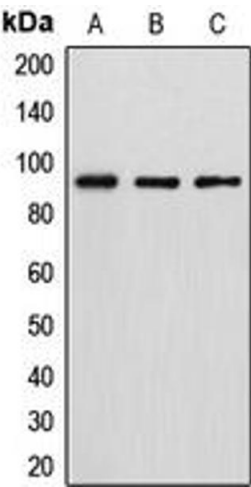
### Application Details

Application Notes:	WB (1:500 - 1:1000)
Restrictions:	For Research Use only

### Handling

Format:	Liquid
Buffer:	Liquid in 0.42 % Potassium phosphate, 0.87 % Sodium chloride, pH 7.3, 30 % glycerol, and 0.01 % sodium azide.
Preservative:	Sodium azide
Precaution of Use:	This product contains Sodium azide: a POISONOUS AND HAZARDOUS SUBSTANCE which should be handled by trained staff only.
Storage:	-20 °C
Storage Comment:	Shipped at 4°C. Upon delivery aliquot and store at -20°C for one year. Avoid freeze/thaw cycles.
Expiry Date:	12 months

### Images



#### Western Blotting

**Image 1.** Western blot analysis of DGK beta expression in HT29 (A), MCF7 (B), HeLa (C) whole cell lysates.