

Datasheet for ABIN7295490

anti-Desmin antibody (C-Term)**3** Images[Go to Product page](#)

Overview

Quantity:	100 µL
Target:	Desmin (DES)
Binding Specificity:	C-Term
Reactivity:	Human, Rat, Chicken, Pig, Dog, Cow
Host:	Rabbit
Clonality:	Polyclonal
Conjugate:	This Desmin antibody is un-conjugated
Application:	Western Blotting (WB), Immunohistochemistry (IHC), Immunofluorescence (IF), Immunochromatography (IC)

Product Details

Immunogen:	KLH-conjugated synthetic peptide encompassing a sequence within the C-term region of human Desmin.
Specificity:	Recognizes endogenous levels of Desmin protein.
Characteristics:	Rabbit polyclonal antibody to Desmin
Purification:	The antibody was purified by immunogen affinity chromatography.

Target Details

Target:	Desmin (DES)
Alternative Name:	Desmin (DES Products)

Target Details

Background:	Desmin
Gene ID:	1674, 64362
UniProt:	P17661 , P48675

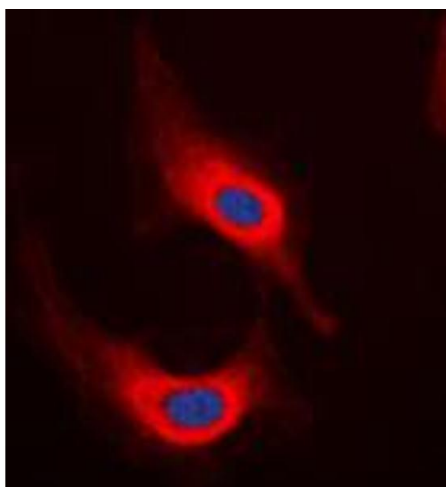
Application Details

Application Notes:	WB (1:500 - 1:1000), IH (1:100 - 1:200), IF/IC (1:100 - 1:500)
Restrictions:	For Research Use only

Handling

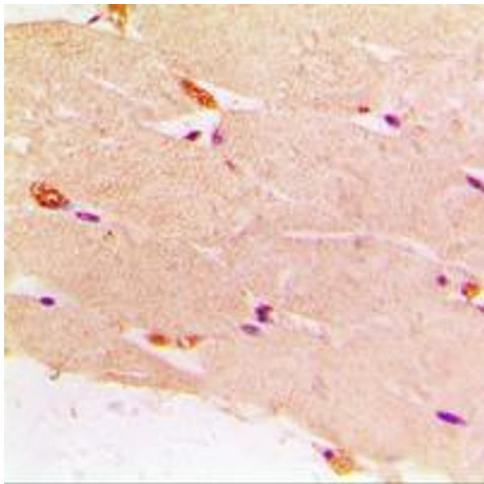
Format:	Liquid
Buffer:	Liquid in 0.42 % Potassium phosphate, 0.87 % Sodium chloride, pH 7.3, 30 % glycerol, and 0.01 % sodium azide.
Preservative:	Sodium azide
Precaution of Use:	This product contains Sodium azide: a POISONOUS AND HAZARDOUS SUBSTANCE which should be handled by trained staff only.
Storage:	-20 °C
Storage Comment:	Shipped at 4°C. Upon delivery aliquot and store at -20°C for one year. Avoid freeze/thaw cycles.
Expiry Date:	12 months

Images



Immunofluorescence

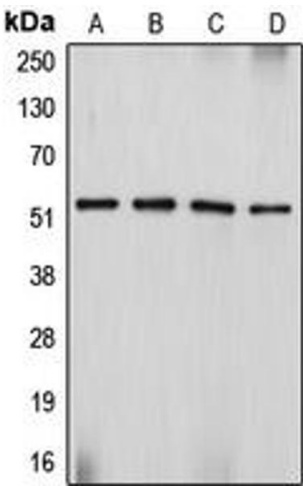
Image 1. Immunofluorescent analysis of Desmin staining in HeLa cells. Formalin-fixed cells were permeabilized with 0.1% Triton X-100 in TBS for 5-10 minutes and blocked with 3% BSA-PBS for 30 minutes at room temperature. Cells were probed with the primary antibody in 3% BSA-PBS and incubated overnight at 4 °C in a humidified chamber. Cells were washed with PBST and incubated with a DyLight 594-conjugated secondary antibody (red) in PBS at room temperature in the dark. DAPI was used to stain the cell



nuclei (blue).

Immunohistochemistry

Image 2. Immunohistochemical analysis of Desmin staining in human muscle formalin fixed paraffin embedded tissue section. The section was pre-treated using heat mediated antigen retrieval with sodium citrate buffer (pH 6.0). The section was then incubated with the antibody at room temperature and detected using an HRP conjugated compact polymer system. DAB was used as the chromogen. The section was then counterstained with haematoxylin and mounted with DPX.



Western Blotting

Image 3. Western blot analysis of Desmin expression in Sol8 (A), HeLa (B), SJRH30 (C), PC12 (D) whole cell lysates.