

Datasheet for ABIN7295520
anti-Atrophin 1 antibody (N-Term)[Go to Product page](#)

1 Image

Overview

Quantity:	100 µL
Target:	Atrophin 1 (ATN1)
Binding Specificity:	N-Term
Reactivity:	Human, Mouse, Rat
Host:	Rabbit
Clonality:	Polyclonal
Conjugate:	This Atrophin 1 antibody is un-conjugated
Application:	Western Blotting (WB), Immunoprecipitation (IP)

Product Details

Immunogen:	KLH-conjugated synthetic peptide encompassing a sequence within the N-term region of human Atrophin-1.
Specificity:	Recognizes endogenous levels of Atrophin-1 protein.
Characteristics:	Rabbit polyclonal antibody to Atrophin-1
Purification:	The antibody was purified by immunogen affinity chromatography.

Target Details

Target:	Atrophin 1 (ATN1)
Alternative Name:	Atrophin-1 (ATN1 Products)
Background:	D12S755E, DRPLA, Atrophin-1, Dentatorubral-pallidoluysian atrophy protein

Target Details

Gene ID:	1822, 13498, 29515
UniProt:	P54259 , O35126 , P54258

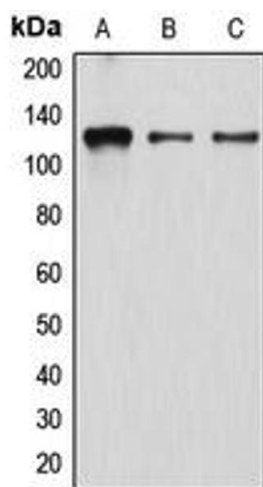
Application Details

Application Notes:	WB (1:500 - 1:1000), IP (1:10 - 1:100)
Restrictions:	For Research Use only

Handling

Format:	Liquid
Buffer:	Liquid in 0.42 % Potassium phosphate, 0.87 % Sodium chloride, pH 7.3, 30 % glycerol, and 0.01 % sodium azide.
Preservative:	Sodium azide
Precaution of Use:	This product contains Sodium azide: a POISONOUS AND HAZARDOUS SUBSTANCE which should be handled by trained staff only.
Storage:	-20 °C
Storage Comment:	Shipped at 4°C. Upon delivery aliquot and store at -20°C for one year. Avoid freeze/thaw cycles.
Expiry Date:	12 months

Images



Western Blotting

Image 1. Western blot analysis of Atrophin-1 expression in K562 (A), EOC20 (B), HeLa (C) whole cell lysates.