



Datasheet for ABIN7295536
anti-E2F4 antibody (Center)



[Go to Product page](#)

2 Images

Overview

Quantity:	100 µL
Target:	E2F4
Binding Specificity:	Center
Reactivity:	Human, Mouse, Rat, Chicken
Host:	Rabbit
Clonality:	Polyclonal
Conjugate:	This E2F4 antibody is un-conjugated
Application:	Western Blotting (WB), Immunohistochemistry (IHC)

Product Details

Immunogen:	KLH-conjugated synthetic peptide encompassing a sequence within the center region of human E2F4.
Specificity:	Recognizes endogenous levels of E2F4 protein.
Characteristics:	Rabbit polyclonal antibody to E2F4
Purification:	The antibody was purified by immunogen affinity chromatography.

Target Details

Target:	E2F4
Alternative Name:	E2F4 (E2F4 Products)
Background:	E2F4, Transcription factor E2F4, E2F-4, E2F5, Transcription factor E2F5, E2F-5

Target Details

Gene ID:	1874, 1875, 104394
UniProt:	Q16254 , Q15329 , Q8R0K9 , Q61502 , Q62814
Pathways:	Cell Division Cycle , Mitotic G1-G1/S Phases , Regulation of Cell Size

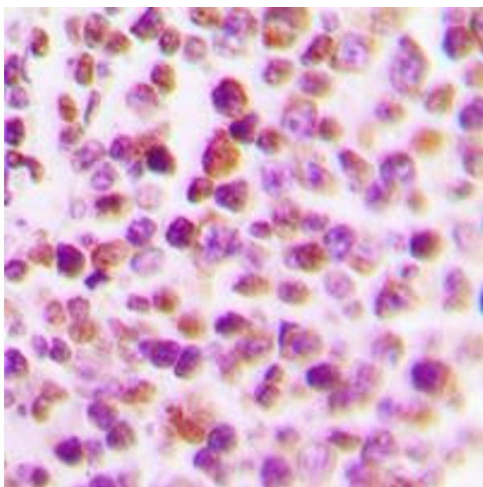
Application Details

Application Notes:	WB (1:500 - 1:1000), IH (1:100 - 1:200)
Restrictions:	For Research Use only

Handling

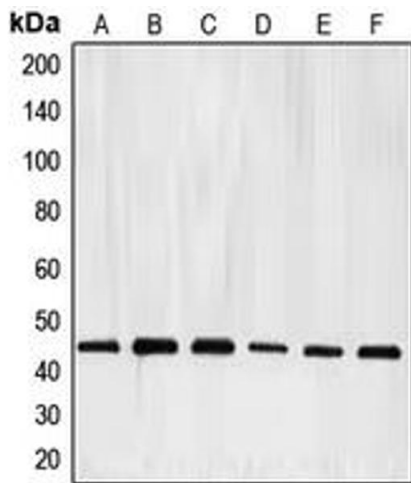
Format:	Liquid
Buffer:	Liquid in 0.42 % Potassium phosphate, 0.87 % Sodium chloride, pH 7.3, 30 % glycerol, and 0.01 % sodium azide.
Preservative:	Sodium azide
Precaution of Use:	This product contains Sodium azide: a POISONOUS AND HAZARDOUS SUBSTANCE which should be handled by trained staff only.
Storage:	-20 °C
Storage Comment:	Shipped at 4°C. Upon delivery aliquot and store at -20°C for one year. Avoid freeze/thaw cycles.
Expiry Date:	12 months

Images



Immunohistochemistry

Image 1. Immunohistochemical analysis of E2F4 staining in human tonsil formalin fixed paraffin embedded tissue section. The section was pre-treated using heat mediated antigen retrieval with sodium citrate buffer (pH 6.0). The section was then incubated with the antibody at room temperature and detected using an HRP conjugated compact polymer system. DAB was used as the chromogen. The section was then counterstained with haematoxylin and mounted with DPX.



Western Blotting

Image 2. Western blot analysis of E2F4 expression in HeLa (A), K562 (B), Jurkat (C), Raji (D), A431 (E), mouse kidney (F) whole cell lysates.