

Datasheet for ABIN7295538
anti-E2F6 antibody (Center)

3 Images

[Go to Product page](#)

Overview

Quantity:	100 µL
Target:	E2F6
Binding Specificity:	Center
Reactivity:	Human, Mouse, Rat, Cow, Pig
Host:	Rabbit
Clonality:	Polyclonal
Conjugate:	This E2F6 antibody is un-conjugated
Application:	Western Blotting (WB), Immunohistochemistry (IHC), Chromatin Immunoprecipitation (ChIP)

Product Details

Immunogen:	KLH-conjugated synthetic peptide encompassing a sequence within the center region of human E2F6.
Specificity:	Recognizes endogenous levels of E2F6 protein.
Characteristics:	Rabbit polyclonal antibody to E2F6
Purification:	The antibody was purified by immunogen affinity chromatography.

Target Details

Target:	E2F6
Alternative Name:	E2F6 (E2F6 Products)
Background:	Transcription factor E2F6, E2F-6

Target Details

Gene ID:	1876, 50496
UniProt:	O75461 , O54917

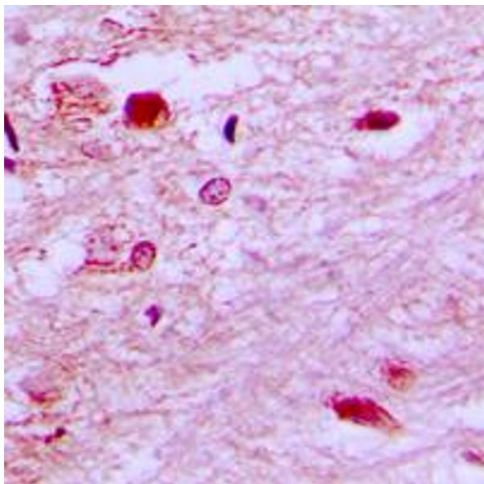
Application Details

Application Notes:	WB (1:500 - 1:1000), IH (1:100 - 1:200), ChIP (1:100 - 1:500)
Restrictions:	For Research Use only

Handling

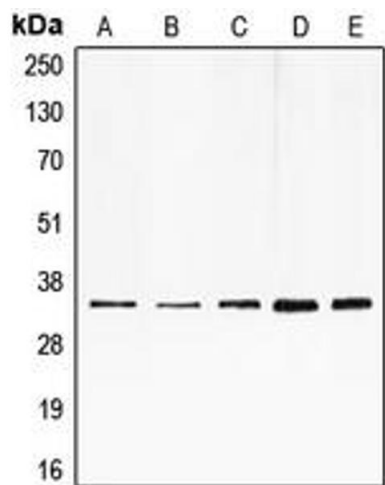
Format:	Liquid
Buffer:	Liquid in 0.42 % Potassium phosphate, 0.87 % Sodium chloride, pH 7.3, 30 % glycerol, and 0.01 % sodium azide.
Preservative:	Sodium azide
Precaution of Use:	This product contains Sodium azide: a POISONOUS AND HAZARDOUS SUBSTANCE which should be handled by trained staff only.
Storage:	-20 °C
Storage Comment:	Shipped at 4°C. Upon delivery aliquot and store at -20°C for one year. Avoid freeze/thaw cycles.
Expiry Date:	12 months

Images



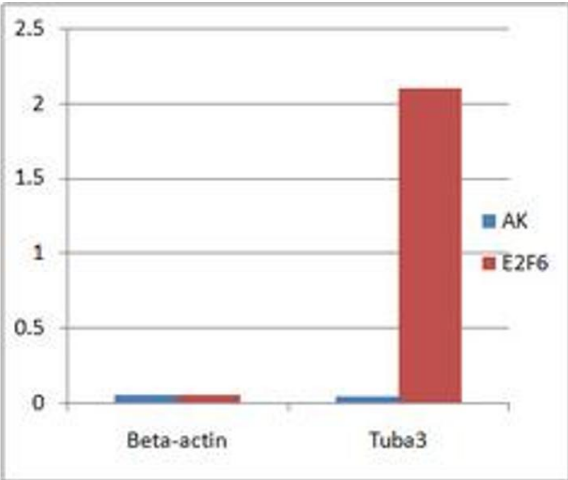
Immunohistochemistry

Image 1. Immunohistochemical analysis of E2F6 staining in human brain formalin fixed paraffin embedded tissue section. The section was pre-treated using heat mediated antigen retrieval with sodium citrate buffer (pH 6.0). The section was then incubated with the antibody at room temperature and detected using an HRP conjugated compact polymer system. DAB was used as the chromogen. The section was then counterstained with haematoxylin and mounted with DPX.



Western Blotting

Image 2. Western blot analysis of E2F6 expression in HeLa (A), HepG2 (B), K562 (C), mouse muscle (D), rat heart (E) whole cell lysates.



Chromatin Immunoprecipitation

Image 3. ChIP analysis of Mouse ES cell nuclear lysate, incubated for 16 hours at 4°C. Cross-linking (X-ChIP) using formaldehyde for 10 minutes. Positive control: Tuba3. Negative Control: Beta-Actin. Detection step: Real-time PCR.