

Datasheet for ABIN7295548
anti-Ephrin A2 antibody (C-Term)[Go to Product page](#)

1 Image

Overview

Quantity:	100 µL
Target:	Ephrin A2 (EFNA2)
Binding Specificity:	C-Term
Reactivity:	Human, Mouse, Rat, Chicken
Host:	Rabbit
Clonality:	Polyclonal
Conjugate:	This Ephrin A2 antibody is un-conjugated
Application:	Western Blotting (WB)

Product Details

Immunogen:	KLH-conjugated synthetic peptide encompassing a sequence within the C-term region of human Ephrin A2.
Specificity:	Recognizes endogenous levels of Ephrin A2 protein.
Characteristics:	Rabbit polyclonal antibody to Ephrin A2
Purification:	The antibody was purified by immunogen affinity chromatography.

Target Details

Target:	Ephrin A2 (EFNA2)
Alternative Name:	Ephrin A2 (EFNA2 Products)
Background:	EPLG6, LERK6, Ephrin-A2, EPH-related receptor tyrosine kinase ligand 6, LERK-6, HEK7 ligand,

Target Details

	HEK7-L
Gene ID:	1943, 13637
UniProt:	O43921 , P52801

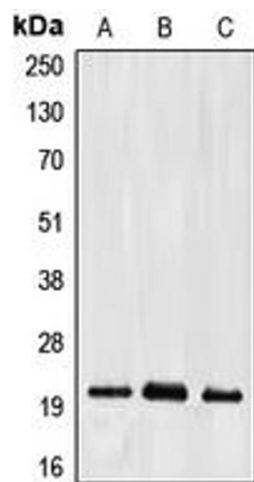
Application Details

Application Notes:	WB (1:500 - 1:1000)
Restrictions:	For Research Use only

Handling

Format:	Liquid
Buffer:	Liquid in 0.42 % Potassium phosphate, 0.87 % Sodium chloride, pH 7.3, 30 % glycerol, and 0.01 % sodium azide.
Preservative:	Sodium azide
Precaution of Use:	This product contains Sodium azide: a POISONOUS AND HAZARDOUS SUBSTANCE which should be handled by trained staff only.
Storage:	-20 °C
Storage Comment:	Shipped at 4°C. Upon delivery aliquot and store at -20°C for one year. Avoid freeze/thaw cycles.
Expiry Date:	12 months

Images



Western Blotting

Image 1. Western blot analysis of Ephrin A2 expression in HepG2 (A), mouse liver (B), rat kidney (C) whole cell lysates.