

Datasheet for ABIN7295550
anti-Ephrin A3 antibody (C-Term)

2 Images

[Go to Product page](#)

Overview

Quantity:	100 µL
Target:	Ephrin A3 (EFNA3)
Binding Specificity:	C-Term
Reactivity:	Human, Mouse, Rat
Host:	Rabbit
Clonality:	Polyclonal
Conjugate:	This Ephrin A3 antibody is un-conjugated
Application:	Western Blotting (WB), Immunofluorescence (IF), Flow Cytometry (FACS), Immunochromatography (IC)

Product Details

Immunogen:	KLH-conjugated synthetic peptide encompassing a sequence within the C-term region of human Ephrin A3.
Specificity:	Recognizes endogenous levels of Ephrin A3 protein.
Characteristics:	Rabbit polyclonal antibody to Ephrin A3
Purification:	The antibody was purified by immunogen affinity chromatography.

Target Details

Target:	Ephrin A3 (EFNA3)
Alternative Name:	Ephrin A3 (EFNA3 Products)

Target Details

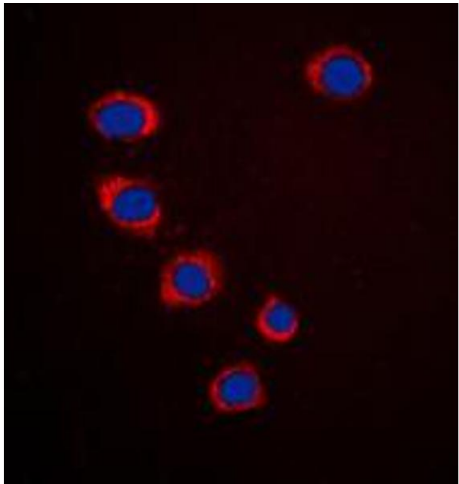
Background:	EFL2, EPLG3, LERK3, Ephrin-A3, EFL-2, EHK1 ligand, EHK1-L, EPH-related receptor tyrosine kinase ligand 3, LERK-3
Gene ID:	1944, 13638
UniProt:	P52797 , O08545
Pathways:	RTK Signaling

Application Details

Application Notes:	WB (1:500 - 1:1000), IF/IC (1:100 - 1:500), FC (1:100 - 1:200)
Restrictions:	For Research Use only

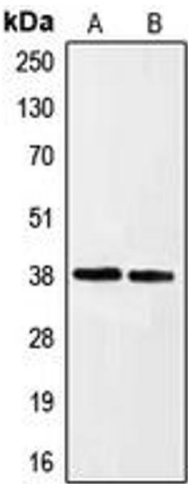
Handling

Format:	Liquid
Buffer:	Liquid in 0.42 % Potassium phosphate, 0.87 % Sodium chloride, pH 7.3, 30 % glycerol, and 0.01 % sodium azide.
Preservative:	Sodium azide
Precaution of Use:	This product contains Sodium azide: a POISONOUS AND HAZARDOUS SUBSTANCE which should be handled by trained staff only.
Storage:	-20 °C
Storage Comment:	Shipped at 4°C. Upon delivery aliquot and store at -20°C for one year. Avoid freeze/thaw cycles.
Expiry Date:	12 months



Immunofluorescence

Image 1. Immunofluorescent analysis of Ephrin A3 staining in HepG2 cells. Formalin-fixed cells were permeabilized with 0.1% Triton X-100 in TBS for 5-10 minutes and blocked with 3% BSA-PBS for 30 minutes at room temperature. Cells were probed with the primary antibody in 3% BSA-PBS and incubated overnight at 4 °C in a humidified chamber. Cells were washed with PBST and incubated with a DyLight 594-conjugated secondary antibody (red) in PBS at room temperature in the dark. DAPI was used to stain the cell nuclei (blue).



Western Blotting

Image 2. Western blot analysis of Ephrin A3 expression in HeLa (A), HepG2 (B) whole cell lysates.