



Datasheet for ABIN7295556
anti-Ephrin B3 antibody (C-Term)



[Go to Product page](#)

2 Images

Overview

Quantity:	100 µL
Target:	Ephrin B3 (EFNB3)
Binding Specificity:	C-Term
Reactivity:	Human, Mouse, Rat, Cow, Rabbit, Dog, Pig
Host:	Rabbit
Clonality:	Polyclonal
Conjugate:	This Ephrin B3 antibody is un-conjugated
Application:	Western Blotting (WB), Immunofluorescence (IF), Immunochromatography (IC)

Product Details

Immunogen:	KLH-conjugated synthetic peptide encompassing a sequence within the C-term region of human Ephrin B3.
Specificity:	Recognizes endogenous levels of Ephrin B3 protein.
Characteristics:	Rabbit polyclonal antibody to Ephrin B3
Purification:	The antibody was purified by immunogen affinity chromatography.

Target Details

Target:	Ephrin B3 (EFNB3)
Alternative Name:	Ephrin B3 (EFNB3 Products)
Background:	EPLG8, LERK8, Ephrin-B3, EPH-related receptor transmembrane ligand ELK-L3, EPH-related

Target Details

receptor tyrosine kinase ligand 8, LERK-8

Gene ID: 1949, 13643

UniProt: [Q15768](#), [O35393](#)

Pathways: [RTK Signaling](#)

Application Details

Application Notes: WB (1:500 - 1:1000), IF/IC (1:100 - 1:500)

Restrictions: For Research Use only

Handling

Format: Liquid

Buffer: Liquid in 0.42 % Potassium phosphate, 0.87 % Sodium chloride, pH 7.3, 30 % glycerol, and 0.01 % sodium azide.

Preservative: Sodium azide

Precaution of Use: This product contains Sodium azide: a POISONOUS AND HAZARDOUS SUBSTANCE which should be handled by trained staff only.

Storage: -20 °C

Storage Comment: Shipped at 4°C. Upon delivery aliquot and store at -20°C for one year. Avoid freeze/thaw cycles.

Expiry Date: 12 months

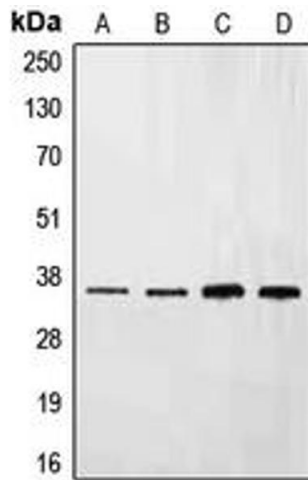
Images



Immunofluorescence

Image 1. Immunofluorescent analysis of Ephrin B3 staining in NIH3T3 cells. Formalin-fixed cells were permeabilized with 0.1% Triton X-100 in TBS for 5-10 minutes and blocked with 3% BSA-PBS for 30 minutes at room temperature. Cells were probed with the primary antibody in 3% BSA-PBS and incubated overnight at 4 °C in a humidified chamber. Cells were washed with PBST and incubated with a DyLight 594-conjugated secondary antibody (red) in PBS at room

temperature in the dark. DAPI was used to stain the cell nuclei (blue).



Western Blotting

Image 2. Western blot analysis of Ephrin B3 expression in HepG2 (A), NIH3T3 (B), mouse liver (C), rat liver (D) whole cell lysates.