



Datasheet for ABIN7295574  
**anti-EIF4G2 antibody (N-Term)**



[Go to Product page](#)

3 Images

Overview

Quantity:	100 µL
Target:	EIF4G2
Binding Specificity:	N-Term
Reactivity:	Human, Mouse, Rat, Cow, Rabbit, Monkey
Host:	Rabbit
Clonality:	Polyclonal
Conjugate:	This EIF4G2 antibody is un-conjugated
Application:	Western Blotting (WB), Immunohistochemistry (IHC), Immunofluorescence (IF), Immunochromatography (IC)

Product Details

Immunogen:	KLH-conjugated synthetic peptide encompassing a sequence within the N-term region of human EIF4G2.
Specificity:	Recognizes endogenous levels of EIF4G2 protein.
Characteristics:	Rabbit polyclonal antibody to EIF4G2
Purification:	The antibody was purified by immunogen affinity chromatography.

Target Details

Target:	EIF4G2
Alternative Name:	EIF4G2 ( <a href="#">EIF4G2 Products</a> )

## Target Details

Background:	DAP5, Eukaryotic translation initiation factor 4 gamma 2, eIF-4-gamma 2, eIF-4G 2, eIF4G 2, Death-associated protein 5, DAP-5, p97
Gene ID:	1982, 13690
UniProt:	<a href="#">P78344</a> , <a href="#">Q62448</a>

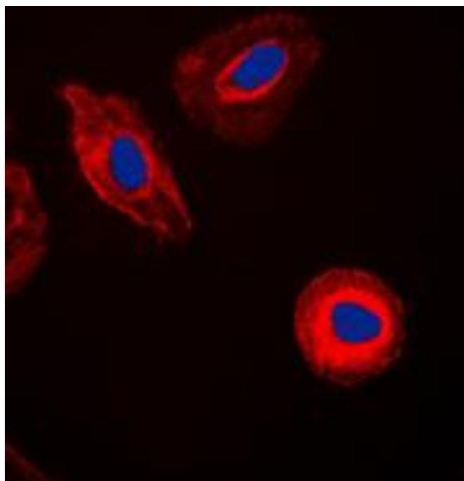
## Application Details

Application Notes:	WB (1:500 - 1:1000), IH (1:100 - 1:200), IF/IC (1:100 - 1:500)
Restrictions:	For Research Use only

## Handling

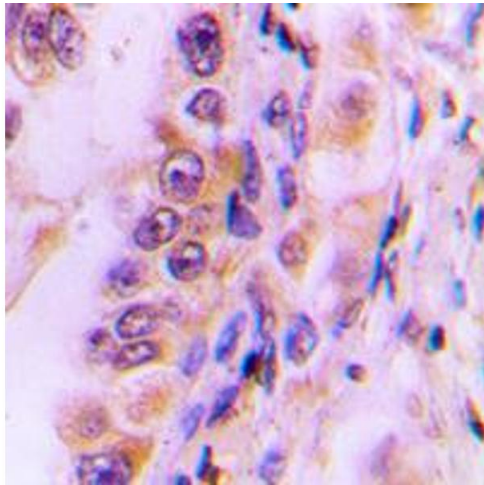
Format:	Liquid
Buffer:	Liquid in 0.42 % Potassium phosphate, 0.87 % Sodium chloride, pH 7.3, 30 % glycerol, and 0.01 % sodium azide.
Preservative:	Sodium azide
Precaution of Use:	This product contains Sodium azide: a POISONOUS AND HAZARDOUS SUBSTANCE which should be handled by trained staff only.
Storage:	-20 °C
Storage Comment:	Shipped at 4°C. Upon delivery aliquot and store at -20°C for one year. Avoid freeze/thaw cycles.
Expiry Date:	12 months

## Images



### Immunofluorescence

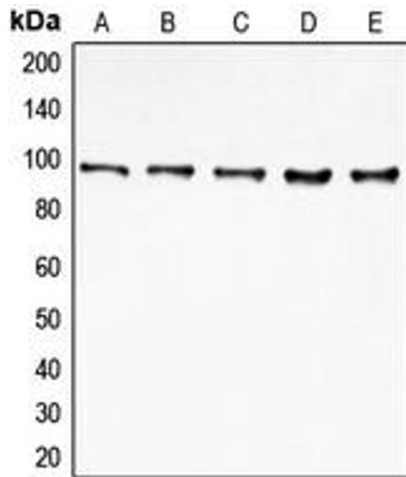
**Image 1.** Immunofluorescent analysis of EIF4G2 staining in HeLa cells. Formalin-fixed cells were permeabilized with 0.1% Triton X-100 in TBS for 5-10 minutes and blocked with 3% BSA-PBS for 30 minutes at room temperature. Cells were probed with the primary antibody in 3% BSA-PBS and incubated overnight at 4 °C in a humidified chamber. Cells were washed with PBST and incubated with a DyLight 594-conjugated secondary antibody (red) in PBS at room



temperature in the dark. DAPI was used to stain the cell nuclei (blue).

### Immunohistochemistry

**Image 2.** Immunohistochemical analysis of EIF4G2 staining in human liver cancer formalin fixed paraffin embedded tissue section. The section was pre-treated using heat mediated antigen retrieval with sodium citrate buffer (pH 6.0). The section was then incubated with the antibody at room temperature and detected using an HRP conjugated compact polymer system. DAB was used as the chromogen. The section was then counterstained with haematoxylin and mounted with DPX.



### Western Blotting

**Image 3.** Western blot analysis of EIF4G2 expression in MCF7 (A), HeLa (B), K562 (C), Jurkat (D), HepG2 (E) whole cell lysates.