

Datasheet for ABIN7295582  
**anti-ELF5 antibody (C-Term)**[Go to Product page](#)

## 2 Images

## Overview

Quantity:	100 µL
Target:	ELF5
Binding Specificity:	C-Term
Reactivity:	Human, Mouse, Rat, Cow
Host:	Rabbit
Clonality:	Polyclonal
Conjugate:	This ELF5 antibody is un-conjugated
Application:	Western Blotting (WB), Immunofluorescence (IF), Immunoprecipitation (IP), Immunochromatography (IC)

## Product Details

Immunogen:	KLH-conjugated synthetic peptide encompassing a sequence within the C-term region of human ELF5.
Specificity:	Recognizes endogenous levels of ELF5 protein.
Characteristics:	Rabbit polyclonal antibody to ELF5
Purification:	The antibody was purified by immunogen affinity chromatography.

## Target Details

Target:	ELF5
Alternative Name:	ELF5 ( <a href="#">ELF5 Products</a> )

## Target Details

Background:	ESE2, ETS-related transcription factor Elf-5, E74-like factor 5, Epithelium-restricted ESE-1-related Ets factor, Epithelium-specific Ets transcription factor 2, ESE-2
Gene ID:	2001, 13711
UniProt:	<a href="#">Q9UKW6</a> , <a href="#">Q8VDK3</a>

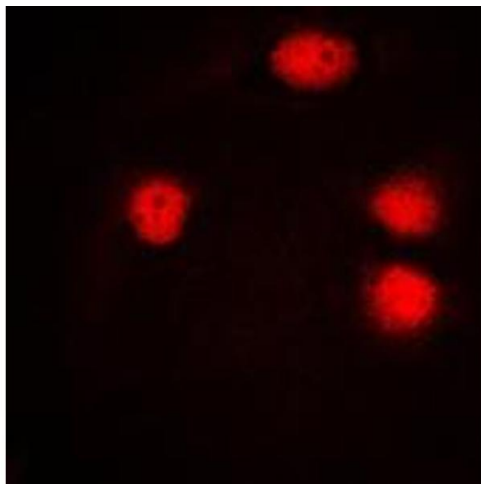
## Application Details

Application Notes:	WB (1:500 - 1:1000), IF/IC (1:100 - 1:500), IP (1:10 - 1:100)
Restrictions:	For Research Use only

## Handling

Format:	Liquid
Buffer:	Liquid in 0.42 % Potassium phosphate, 0.87 % Sodium chloride, pH 7.3, 30 % glycerol, and 0.01 % sodium azide.
Preservative:	Sodium azide
Precaution of Use:	This product contains Sodium azide: a POISONOUS AND HAZARDOUS SUBSTANCE which should be handled by trained staff only.
Storage:	-20 °C
Storage Comment:	Shipped at 4°C. Upon delivery aliquot and store at -20°C for one year. Avoid freeze/thaw cycles.
Expiry Date:	12 months

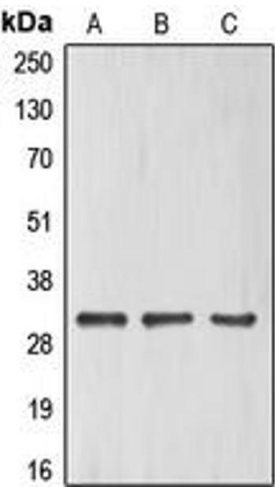
## Images



### Immunofluorescence

**Image 1.** Immunofluorescent analysis of ELF5 staining in HuvEc cells. Formalin-fixed cells were permeabilized with 0.1% Triton X-100 in TBS for 5-10 minutes and blocked with 3% BSA-PBS for 30 minutes at room temperature. Cells were probed with the primary antibody in 3% BSA-PBS and incubated overnight at 4 °C in a humidified chamber. Cells were washed with PBST and incubated with a DyLight 594-conjugated secondary antibody (red) in PBS at room

temperature in the dark. DAPI was used to stain the cell nuclei (blue).



Western Blotting

**Image 2.** Western blot analysis of ELF5 expression in HeLa (A), HuvEc (B), Jurkat (C) whole cell lysates.