

Datasheet for ABIN7295594
anti-p300 antibody (N-Term)



[Go to Product page](#)

2 Images

Overview

Quantity:	100 µL
Target:	p300 (EP300)
Binding Specificity:	N-Term
Reactivity:	Human, Mouse, Rat, Chicken, Cow, Dog, Pig
Host:	Rabbit
Clonality:	Polyclonal
Conjugate:	This p300 antibody is un-conjugated
Application:	Western Blotting (WB), Immunohistochemistry (IHC)

Product Details

Immunogen:	KLH-conjugated synthetic peptide encompassing a sequence within the N-term region of human p300.
Specificity:	Recognizes endogenous levels of p300 protein.
Characteristics:	Rabbit polyclonal antibody to p300
Purification:	The antibody was purified by immunogen affinity chromatography.

Target Details

Target:	p300 (EP300)
Alternative Name:	p300 (EP300 Products)
Background:	P300, Histone acetyltransferase p300, p300 HAT, E1A-associated protein p300

Target Details

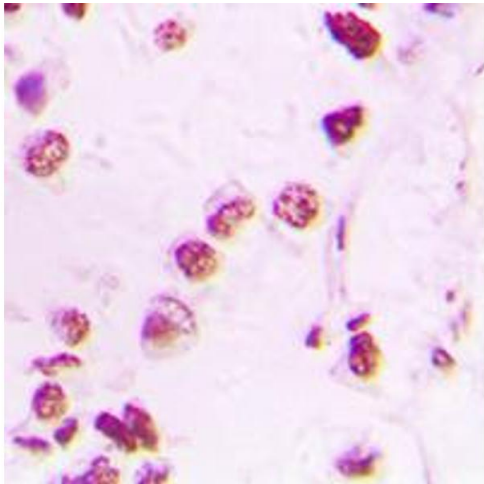
Gene ID:	2033, 328572
UniProt:	Q09472 , B2RWS6
Pathways:	p53 Signaling , Notch Signaling , Interferon-gamma Pathway , Intracellular Steroid Hormone Receptor Signaling Pathway , Regulation of Intracellular Steroid Hormone Receptor Signaling , Regulation of Lipid Metabolism by PPARalpha , Regulation of Muscle Cell Differentiation , Regulation of Cell Size

Application Details

Application Notes:	WB (1:500 - 1:1000), IH (1:100 - 1:200)
Restrictions:	For Research Use only

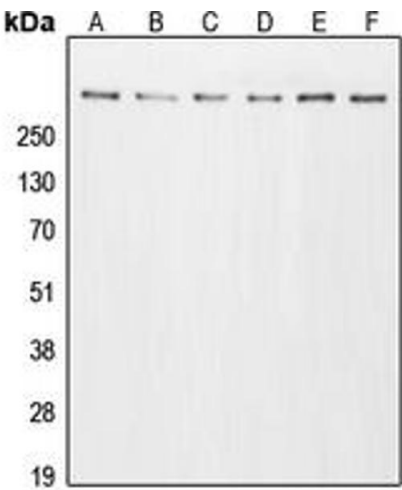
Handling

Format:	Liquid
Buffer:	Liquid in 0.42 % Potassium phosphate, 0.87 % Sodium chloride, pH 7.3, 30 % glycerol, and 0.01 % sodium azide.
Preservative:	Sodium azide
Precaution of Use:	This product contains Sodium azide: a POISONOUS AND HAZARDOUS SUBSTANCE which should be handled by trained staff only.
Storage:	-20 °C
Storage Comment:	Shipped at 4°C. Upon delivery aliquot and store at -20°C for one year. Avoid freeze/thaw cycles.
Expiry Date:	12 months



Immunohistochemistry

Image 1. Immunohistochemical analysis of p300 staining in human lung cancer formalin fixed paraffin embedded tissue section. The section was pre-treated using heat mediated antigen retrieval with sodium citrate buffer (pH 6.0). The section was then incubated with the antibody at room temperature and detected using an HRP conjugated compact polymer system. DAB was used as the chromogen. The section was then counterstained with haematoxylin and mounted with DPX.



Western Blotting

Image 2. Western blot analysis of p300 expression in A431 (A), HeLa (B), HT29 (C), A549 (D), NIH3T3 (E), PC12 (F) whole cell lysates.