

Datasheet for ABIN7295606
anti-NR2F6 antibody (N-Term)

3 Images

[Go to Product page](#)

Overview

Quantity:	100 µL
Target:	NR2F6
Binding Specificity:	N-Term
Reactivity:	Human, Rat, Mouse, Dog, Cow, Pig
Host:	Rabbit
Clonality:	Polyclonal
Conjugate:	This NR2F6 antibody is un-conjugated
Application:	Western Blotting (WB), Immunohistochemistry (IHC), Immunofluorescence (IF), Immunoprecipitation (IP), Immunochromatography (IC)

Product Details

Immunogen:	KLH-conjugated synthetic peptide encompassing a sequence within the N-term region of human NR2F6.
Specificity:	Recognizes endogenous levels of NR2F6 protein.
Characteristics:	Rabbit polyclonal antibody to NR2F6
Purification:	The antibody was purified by immunogen affinity chromatography.

Target Details

Target:	NR2F6
Alternative Name:	NR2F6 (NR2F6 Products)

Target Details

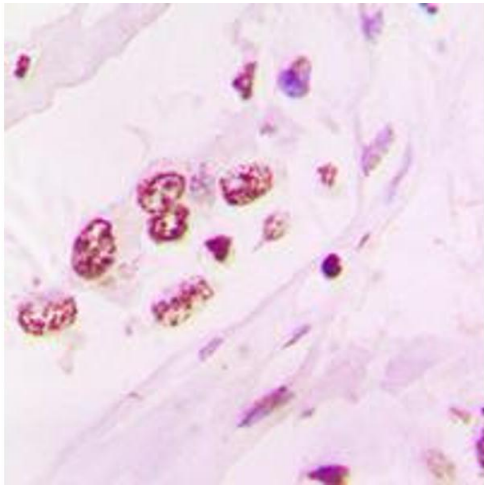
Background:	EAR2, ERBAL2, Nuclear receptor subfamily 2 group F member 6, V-erbA-related protein 2, EAR-2
Gene ID:	2063, 13864, 245980
UniProt:	P10588 , P43136 , O09017
Pathways:	Nuclear Receptor Transcription Pathway , Steroid Hormone Mediated Signaling Pathway , Photoperiodism

Application Details

Application Notes:	WB (1:500 - 1:1000), IH (1:100 - 1:200), IF/IC (1:100 - 1:500), IP (1:10 - 1:100)
Restrictions:	For Research Use only

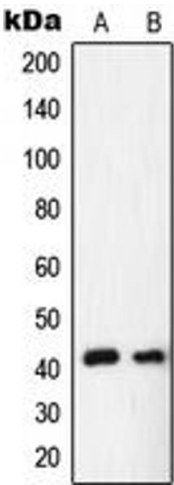
Handling

Format:	Liquid
Buffer:	Liquid in 0.42 % Potassium phosphate, 0.87 % Sodium chloride, pH 7.3, 30 % glycerol, and 0.01 % sodium azide.
Preservative:	Sodium azide
Precaution of Use:	This product contains Sodium azide: a POISONOUS AND HAZARDOUS SUBSTANCE which should be handled by trained staff only.
Storage:	-20 °C
Storage Comment:	Shipped at 4°C. Upon delivery aliquot and store at -20°C for one year. Avoid freeze/thaw cycles.
Expiry Date:	12 months



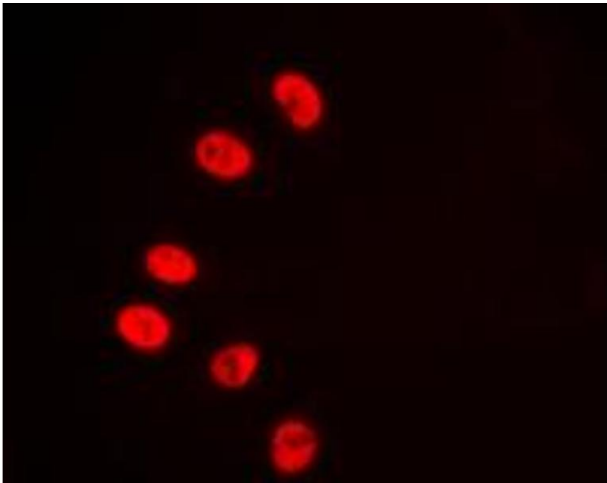
Immunohistochemistry

Image 1. Immunohistochemical analysis of NR2F6 staining in human lung cancer formalin fixed paraffin embedded tissue section. The section was pre-treated using heat mediated antigen retrieval with sodium citrate buffer (pH 6.0). The section was then incubated with the antibody at room temperature and detected using an HRP conjugated compact polymer system. DAB was used as the chromogen. The section was then counterstained with haematoxylin and mounted with DPX.



Western Blotting

Image 2. Western blot analysis of NR2F6 expression in HepG2 (A), rat liver (B) whole cell lysates.



Immunofluorescence

Image 3. Immunofluorescent analysis of NR2F6 staining in HepG2 cells. Formalin-fixed cells were permeabilized with 0.1% Triton X-100 in TBS for 5-10 minutes and blocked with 3% BSA-PBS for 30 minutes at room temperature. Cells were probed with the primary antibody in 3% BSA-PBS and incubated overnight at 4 °C in a humidified chamber. Cells were washed with PBST and incubated with a DyLight 594-conjugated secondary antibody (red) in PBS at room temperature in the dark. DAPI was used to stain the cell nuclei (blue).