

Datasheet for ABIN7295670
anti-FHL3 antibody (Center)[Go to Product page](#)

1 Image

Overview

Quantity:	100 µL
Target:	FHL3
Binding Specificity:	Center
Reactivity:	Human, Mouse, Rat, Cow, Pig
Host:	Rabbit
Clonality:	Polyclonal
Conjugate:	This FHL3 antibody is un-conjugated
Application:	Western Blotting (WB)

Product Details

Immunogen:	KLH-conjugated synthetic peptide encompassing a sequence within the center region of human FHL3.
Specificity:	Recognizes endogenous levels of FHL3 protein.
Characteristics:	Rabbit polyclonal antibody to FHL3
Purification:	The antibody was purified by immunogen affinity chromatography.

Target Details

Target:	FHL3
Alternative Name:	FHL3 (FHL3 Products)
Background:	SLIM2, Four and a half LIM domains protein 3, FHL-3, Skeletal muscle LIM-protein 2, SLIM-2

Target Details

Gene ID:	2275, 14201
UniProt:	Q13643 , Q9R059

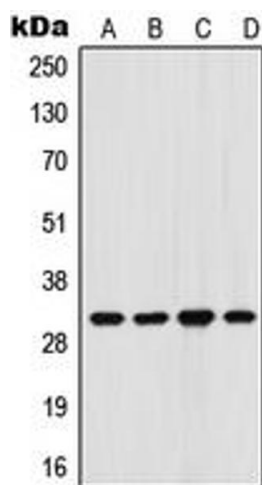
Application Details

Application Notes:	WB (1:500 - 1:1000)
Restrictions:	For Research Use only

Handling

Format:	Liquid
Buffer:	Liquid in 0.42 % Potassium phosphate, 0.87 % Sodium chloride, pH 7.3, 30 % glycerol, and 0.01 % sodium azide.
Preservative:	Sodium azide
Precaution of Use:	This product contains Sodium azide: a POISONOUS AND HAZARDOUS SUBSTANCE which should be handled by trained staff only.
Storage:	-20 °C
Storage Comment:	Shipped at 4°C. Upon delivery aliquot and store at -20°C for one year. Avoid freeze/thaw cycles.
Expiry Date:	12 months

Images



Western Blotting

Image 1. Western blot analysis of FHL3 expression in K562 (A), HeLa (B), Raw264.7 (C), PC12 (D) whole cell lysates.