

Datasheet for ABIN7295676  
**anti-FOXO1 antibody (pSer319)**



[Go to Product page](#)

3 Images

## Overview

Quantity:	100 µL
Target:	FOXO1
Binding Specificity:	pSer319
Reactivity:	Human, Mouse, Rat, Cow, Pig, Monkey
Host:	Rabbit
Clonality:	Polyclonal
Conjugate:	This FOXO1 antibody is un-conjugated
Application:	Western Blotting (WB), Immunohistochemistry (IHC), Immunofluorescence (IF), Immunochromatography (IC)

## Product Details

Immunogen:	KLH-conjugated synthetic peptide encompassing a sequence within the center region of human FOXO1.
Specificity:	Recognizes endogenous levels of FOXO1 (pS319) protein.
Characteristics:	Rabbit polyclonal antibody to FOXO1 (pS319)
Purification:	The antibody was purified by immunogen affinity chromatography.

## Target Details

Target:	FOXO1
Alternative Name:	FOXO1 ( <a href="#">FOXO1 Products</a> )

## Target Details

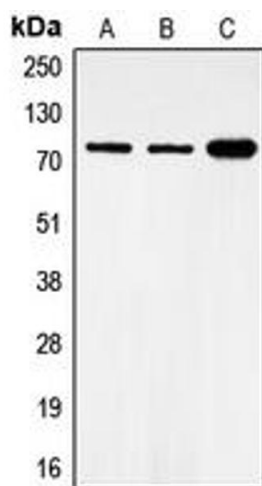
Background:	FKHR, FOXO1A, Forkhead box protein O1, Forkhead box protein O1A, Forkhead in rhabdomyosarcoma
Gene ID:	2308, 56458, 84482
UniProt:	<a href="#">Q12778</a> , <a href="#">Q9R1E0</a> , <a href="#">G3V7R4</a>
Pathways:	<a href="#">PI3K-Akt Signaling</a> , <a href="#">Cell Division Cycle</a> , <a href="#">Fc-epsilon Receptor Signaling Pathway</a> , <a href="#">EGFR Signaling Pathway</a> , <a href="#">Neurotrophin Signaling Pathway</a> , <a href="#">Carbohydrate Homeostasis</a> , <a href="#">Chromatin Binding</a> , <a href="#">Regulation of Carbohydrate Metabolic Process</a> , <a href="#">CXCR4-mediated Signaling Events</a> , <a href="#">BCR Signaling</a>

## Application Details

Application Notes:	WB (1:500 - 1:1000), IH (1:100 - 1:200), IF/IC (1:100 - 1:500)
Restrictions:	For Research Use only

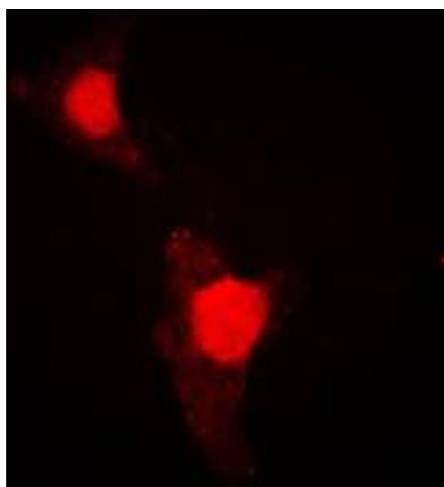
## Handling

Format:	Liquid
Buffer:	Liquid in 0.42 % Potassium phosphate, 0.87 % Sodium chloride, pH 7.3, 30 % glycerol, and 0.01 % sodium azide.
Preservative:	Sodium azide
Precaution of Use:	This product contains Sodium azide: a POISONOUS AND HAZARDOUS SUBSTANCE which should be handled by trained staff only.
Storage:	-20 °C
Storage Comment:	Shipped at 4°C. Upon delivery aliquot and store at -20°C for one year. Avoid freeze/thaw cycles.
Expiry Date:	12 months



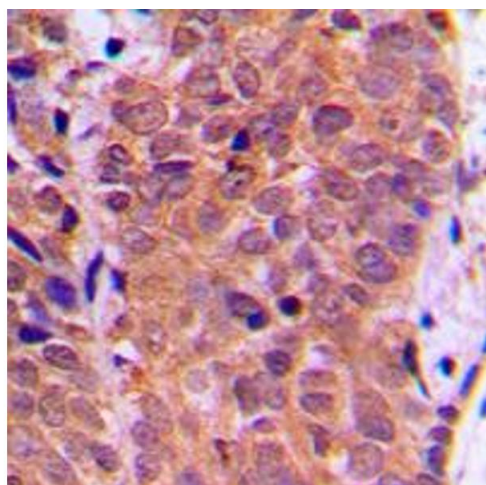
### Western Blotting

**Image 1.** Western blot analysis of FOXO1 (pS319) expression in MCF7 (A), HeLa (B), NIH3T3 (C) whole cell lysates.



### Immunofluorescence

**Image 2.** Immunofluorescent analysis of FOXO1 (pS319) staining in HeLa cells. Formalin-fixed cells were permeabilized with 0.1% Triton X-100 in TBS for 5-10 minutes and blocked with 3% BSA-PBS for 30 minutes at room temperature. Cells were probed with the primary antibody in 3% BSA-PBS and incubated overnight at 4 °C in a humidified chamber. Cells were washed with PBST and incubated with a DyLight 594-conjugated secondary antibody (red) in PBS at room temperature in the dark. DAPI was used to stain the cell nuclei (blue).



### Immunohistochemistry

**Image 3.** Immunohistochemical analysis of FOXO1 (pS319) staining in human breast cancer formalin fixed paraffin embedded tissue section. The section was pre-treated using heat mediated antigen retrieval with sodium citrate buffer (pH 6.0). The section was then incubated with the antibody at room temperature and detected using an HRP conjugated compact polymer system. DAB was used as the chromogen. The section was then counterstained with haematoxylin and mounted with DPX.