

Datasheet for ABIN7295738
anti-GATA1 antibody (Center)

3 Images

[Go to Product page](#)

Overview

Quantity:	100 µL
Target:	GATA1
Binding Specificity:	Center
Reactivity:	Human, Mouse, Rat, Monkey, Pig, Dog
Host:	Rabbit
Clonality:	Polyclonal
Conjugate:	This GATA1 antibody is un-conjugated
Application:	Western Blotting (WB), Immunohistochemistry (IHC), Immunofluorescence (IF), Immunoprecipitation (IP), Immunochromatography (IC)

Product Details

Immunogen:	KLH-conjugated synthetic peptide encompassing a sequence within the center region of human GATA1.
Specificity:	Recognizes endogenous levels of GATA1 protein.
Characteristics:	Rabbit polyclonal antibody to GATA1
Purification:	The antibody was purified by immunogen affinity chromatography.

Target Details

Target:	GATA1
Alternative Name:	GATA1 (GATA1 Products)

Target Details

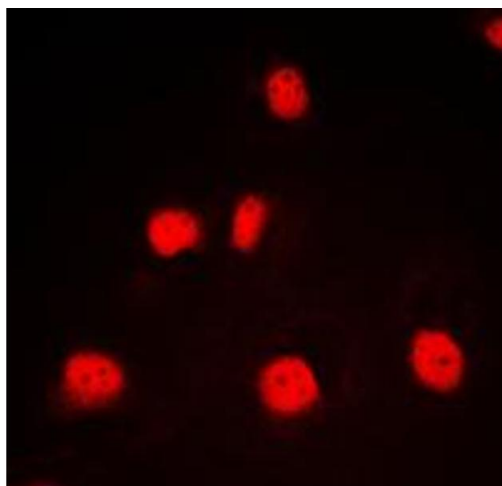
Background:	ERYF1, GF1, Erythroid transcription factor, Eryf1, GATA-binding factor 1, GATA-1, GF-1, NF-E1 DNA-binding protein
Gene ID:	2623, 14460, 100911167
UniProt:	P15976 , P17679 , P43429
Pathways:	Cellular Response to Molecule of Bacterial Origin

Application Details

Application Notes:	WB (1:500 - 1:1000), IH (1:100 - 1:200), IF/IC (1:100 - 1:500), IP (1:10 - 1:100)
Restrictions:	For Research Use only

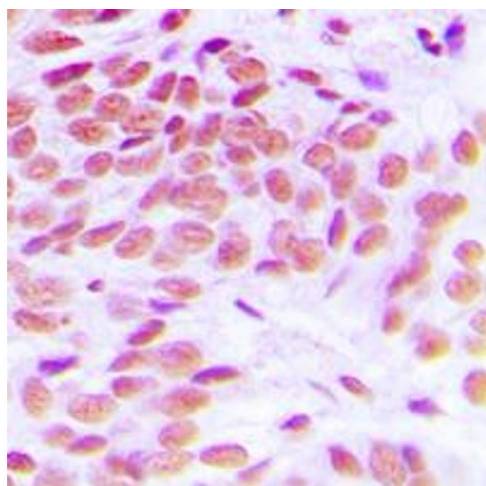
Handling

Format:	Liquid
Buffer:	Liquid in 0.42 % Potassium phosphate, 0.87 % Sodium chloride, pH 7.3, 30 % glycerol, and 0.01 % sodium azide.
Preservative:	Sodium azide
Precaution of Use:	This product contains Sodium azide: a POISONOUS AND HAZARDOUS SUBSTANCE which should be handled by trained staff only.
Storage:	-20 °C
Storage Comment:	Shipped at 4°C. Upon delivery aliquot and store at -20°C for one year. Avoid freeze/thaw cycles.
Expiry Date:	12 months



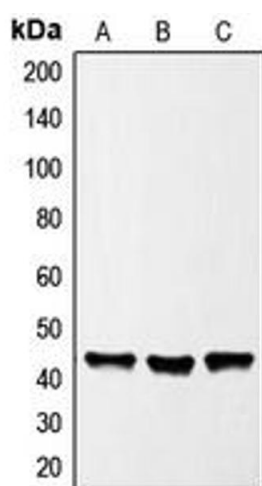
Immunofluorescence

Image 1. Immunofluorescent analysis of GATA1 staining in K562 cells. Formalin-fixed cells were permeabilized with 0.1% Triton X-100 in TBS for 5-10 minutes and blocked with 3% BSA-PBS for 30 minutes at room temperature. Cells were probed with the primary antibody in 3% BSA-PBS and incubated overnight at 4 °C in a humidified chamber. Cells were washed with PBST and incubated with a DyLight 594-conjugated secondary antibody (red) in PBS at room temperature in the dark. DAPI was used to stain the cell nuclei (blue).



Immunohistochemistry

Image 2. Immunohistochemical analysis of GATA1 staining in human breast cancer formalin fixed paraffin embedded tissue section. The section was pre-treated using heat mediated antigen retrieval with sodium citrate buffer (pH 6.0). The section was then incubated with the antibody at room temperature and detected using an HRP conjugated compact polymer system. DAB was used as the chromogen. The section was then counterstained with haematoxylin and mounted with DPX.



Western Blotting

Image 3. Western blot analysis of GATA1 expression in HeLa (A), K562 (B), NIH3T3 (C) whole cell lysates.