



[Go to Product page](#)

Datasheet for ABIN7295756
anti-GHRHR antibody (C-Term)

2 Images

Overview

Quantity:	100 µL
Target:	GHRHR
Binding Specificity:	C-Term
Reactivity:	Human, Rat, Mouse, Monkey
Host:	Rabbit
Clonality:	Polyclonal
Conjugate:	This GHRHR antibody is un-conjugated
Application:	Western Blotting (WB), Immunofluorescence (IF), Immunochromatography (IC)

Product Details

Immunogen:	KLH-conjugated synthetic peptide encompassing a sequence within the C-term region of human GHRH Receptor.
Specificity:	Recognizes endogenous levels of GHRH Receptor protein.
Characteristics:	Rabbit polyclonal antibody to GHRH Receptor
Purification:	The antibody was purified by immunogen affinity chromatography.

Target Details

Target:	GHRHR
Alternative Name:	GHRH Receptor (GHRHR Products)
Background:	Growth hormone-releasing hormone receptor, GHRH receptor, Growth hormone-releasing

Target Details

factor receptor, GRF receptor, GRFR

Gene ID: 2692, 14602, 25321

UniProt: [Q02643](#), [P32082](#), [Q02644](#)

Pathways: [Intracellular Steroid Hormone Receptor Signaling Pathway](#), [Hormone Transport](#), [Regulation of Intracellular Steroid Hormone Receptor Signaling](#), [cAMP Metabolic Process](#)

Application Details

Application Notes: WB (1:500 - 1:1000), IF/IC (1:100 - 1:500)

Restrictions: For Research Use only

Handling

Format: Liquid

Buffer: Liquid in 0.42 % Potassium phosphate, 0.87 % Sodium chloride, pH 7.3, 30 % glycerol, and 0.01 % sodium azide.

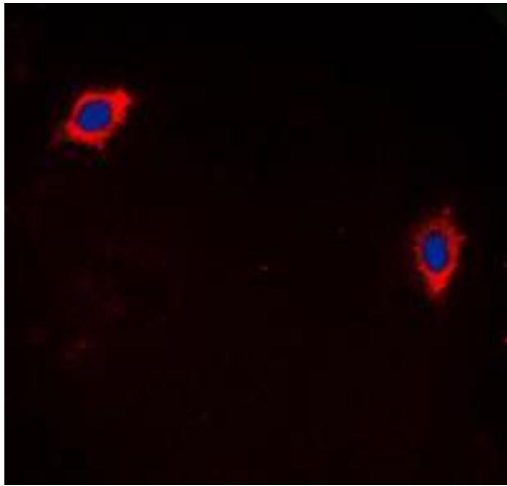
Preservative: Sodium azide

Precaution of Use: This product contains Sodium azide: a POISONOUS AND HAZARDOUS SUBSTANCE which should be handled by trained staff only.

Storage: -20 °C

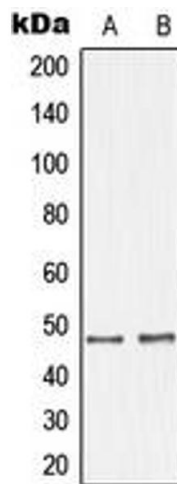
Storage Comment: Shipped at 4°C. Upon delivery aliquot and store at -20°C for one year. Avoid freeze/thaw cycles.

Expiry Date: 12 months



Immunofluorescence

Image 1. Immunofluorescent analysis of GHRH Receptor staining in LOVO cells. Formalin-fixed cells were permeabilized with 0.1% Triton X-100 in TBS for 5-10 minutes and blocked with 3% BSA-PBS for 30 minutes at room temperature. Cells were probed with the primary antibody in 3% BSA-PBS and incubated overnight at 4 °C in a humidified chamber. Cells were washed with PBST and incubated with a DyLight 594-conjugated secondary antibody (red) in PBS at room temperature in the dark. DAPI was used to stain the cell nuclei (blue).



Western Blotting

Image 2. Western blot analysis of GHRH Receptor expression in SKNSH (A), LOVO (B) whole cell lysates.